



PAA FOUNDATION
2015
ANNUAL REPORT

Give Bold

Dear Friends,

Meet our Bold Givers - members of the PAA Foundation. These individuals know that charitable giving can have a large and lasting impact on the community.

In 2015, over \$2.7 million was granted to charitable organizations by PAAF account holders. Their donations built hospitals, funded schools, inspired the arts, and gave hope to those in need.

A resource to maximize your charitable giving, the PAAF offers incentive money like no other foundation. We connect you to resources that will help you become a more effective and satisfied giver, all while providing great flexibility - we do not suggest specific places to give. You choose the charities that matter most to you.

We hope this publication inspires you to think big - to give boldly. If you would like your giving to be more strategic and aligned with your vision in 2016 and if you haven't explored the many benefits of a PAA Foundation account, I encourage you to make this the year you do.

J. Paul McMillen, President
Kelly Fromuth, Executive Director



Board of Trustees

David B. Penske, Chairman
Penske Buick GMC Trucks, Inc.
Shillington

John Oyler, Treasurer
The Faulkner Organization
Trevose

Steven G. Jones, Secretary
Jones Dealerships
Lancaster

PAA Chairman, Ex-Officio
James A. Peruto
Keenan Motors, Doylestown

PAA President, Ex-Officio
John Devlin

Blaise Alexander
Alexander Family Dealerships
Montoursville

Deborah Numrich Campbell
Day Automotive Group
Monroeville

Robert Cochran
#1 Cochran
Monroeville

Cindy Cook
Jim Wynn Volkswagen Volvo, Inc.
Norristown

Robert J. Dolan
Conrad Siegel Actuaries
Harrisburg

Bryan M. Gault
Wind Gap Chevrolet-Buick, Inc.
Wind Gap

Kermit G. Hicks
Greencastle

Robert L. Hunter
Hunter's Truck Sales and Service
Butler

Allan E. Jennings
Jennings Chevrolet Buick
Chambersburg

Robert P. Kelly
Kelly Corporation
Emmaus

Scott Lustgarten
Martin Dealerships
Ardmore

William P. Manos
Fairfield Auto Group, Inc.
Montoursville

Fred Savage
Savage Automotive Group
Shillington

Craig C. Scott
Scott Honda of West Chester
West Chester

Kenneth B. Shockey
Greencastle

Michael B. Smith
Laurel Auto Group
Johnstown



Table of Contents

Chairman's Message	03
Children & Youth	04-05
Health Services	06-07
Education	08-09
History and the Arts	10-11
Community Enhancement	12-13
PAA Scholarships	14-15
Grants Distributed	16-17
Account Holders	18-26
Financials	27

To my colleagues and friends,

It is my pleasure to offer you the 2015 PAA Foundation Annual Report. On the following pages is not only information on the many worthwhile organizations receiving donations from account holders, but also stories explaining the reasons behind those gifts.

Those with charitable intent are encouraged to take advantage of establishing a PAAF Donor Advised Account. The PAA Foundation is a valuable and flexible resource which can be used to administer your charitable giving.

A philanthropic tool, PAAF makes it easy to support the charities that matter most to you. If you would like to contribute but do not want to take part in one of the established Giving Recognition Levels, a donation in any amount can always be made to the PAA Scholarship Fund.

As you will see, 2015 was a very prosperous year for the PAA Foundation. The Foundation once again experienced tremendous growth and welcomed several new account holders.

Over \$2.7 million was granted to various charitable organizations by PAAF Donor Advised and Benefactor Club account holders.

We hope that as you read this report you are inspired to find the causes and organizations that matter most to you.

PAAF account holders care about their communities, and it shows. We commend the good work you are doing and look forward to another successful year!



PAAF Chairman David B. Penske
Penske Buick GMC Trucks, Inc.
Shillington



Children's Hospital of Philadelphia

MAC Chapman Family Foundation

In 2015, the MAC Chapman Family Foundation generously donated to the Children's Hospital of Philadelphia to provide a family suite for casting broken bones. The Children's Hospital of Philadelphia (CHOP) is the nation's first hospital devoted exclusively to the care of children. Since their start in 1855, CHOP has been the birthplace for many dramatic firsts in pediatric medicine. The hospital has fostered medical discoveries and innovations that have improved pediatric healthcare and saved countless children's lives. Today, families facing complex conditions come to CHOP from all over the world. The hospital's care and innovation has repeatedly earned CHOP a spot on the U.S. News & World Report's Honor Roll of the nation's best children's hospitals.



Driving Away the Cold

Auto Dealers CARing for Kids Foundation

The Auto Dealers CARing for Kids Foundation distributed more than 42,000 new winter coats to underprivileged children in the five county Philadelphia region in 2015 through its Driving Away the Cold program. During a special month-long program in September, participating franchised dealers pledge a brand-new winter coat each time a vehicle is sold at their dealerships. 178 new automobile dealers participated in 2015. New winter coats are distributed to local children through a network of more than 100 YMCAs, social service agencies, school districts, and homeless shelters. Since 2008, the Auto Dealers CARing for Kids Foundation have warmed the hearts of 220,182 local children with the gift of a new winter coat. “The past several Philadelphia winters have been brutally cold, and many children either went to school without a coat or didn’t go to school at all,” says Kevin Mazzucola, executive director of the Foundation. “Neither of those scenarios is acceptable. That’s why ADAGP’s dealer members are committed to this program.”

Alex’s Lemonade Stand Foundation

Wynn Family Foundation

In 2000, 4-year-old Alex, a cancer patient who died in 2004 at the age of 8, announced that she wanted to hold a lemonade stand to raise money to help find a cure for all children with cancer. Since Alex held that first stand, the foundation bearing her name has evolved into a national fundraising movement, complete with thousands of supporters across the country carrying on her legacy of hope. In 2015, Alex’s Lemonade Stand Foundation received a grant from the Wynn Family Foundation.

Sunrise School

Biondi Family Foundation

Sunrise School, an educational facility in Monroeville, Pennsylvania, is dedicated to the academic, vocational, social and emotional development of children with special needs. Their program includes students from ages five to twenty-one with classes in learning support, life skills, multi-disabilities support, and autistic support. In 2015, the Sunrise School received a generous donation from the Biondi Family Foundation.





Wounded Warrior Project

Allen Family Foundation

Wounded Warrior Project (WWP) stepped in to help when B.J. Ganem (pictured at left) experienced a gap in benefits during his medical retirement from the Marine Corps. Wounded Warrior Project serves veterans and service members who incurred a physical or mental injury, illness, or wound, related to military service on or after September 11, 2001 and their families. On that date, America watched in horror as approximately 3,000 people died including hundreds of firefighters and rescue workers. Many of those serving in the military note a sense of duty to volunteer following that tragic day.

September 11th also led to Operations Iraqi Freedom, Enduring Freedom, and New Dawn, which concluded on December 15, 2011. Our military presence, however, remains to this day.

With advancements in battlefield medicine and body armor, an unprecedented percentage of service members are surviving severe wounds or injuries. Combined, over 48,000 servicemen and women have been physically injured in the recent military conflicts. In addition to the physical wounds, it is estimated as many as 400,000 service members live with the invisible wounds of war including combat-related stress, major depression, and post-traumatic stress disorder. With the mission to honor and empower, WWP is the hand extended to encourage warriors as they adjust to their new normal and achieve new triumphs. Offering a variety of programs and services, WWP is equipped to serve warriors with every type of injury – from the physical to the invisible wounds of war. They envision a generation of Wounded Warriors well-adjusted in body, receiving the care they need to maximize rehabilitation and live active and healthy lives.

In 2015, Wounded Warrior Project received a generous donation from the Allen Family Foundation.



Canine Companions For Independence

Landis Family Foundation

In 2015, Canine Companions for Independence received a generous contribution from the Landis Family Foundation. Canine Companions for Independence, founded in 1975, is a non-profit organization that enhances the lives of people with disabilities by providing highly trained assistance dogs and ongoing support to ensure quality partnerships.

Savannah is eleven years old, plays basketball, excels in her schoolwork, is a cheerleader, studies music and dance, is a pageant winner and enjoys hiking - all from a wheelchair. She could do her homework each night, but she couldn't pick up her dropped pencil. She could speak openly on stage in front of hundreds of people and a panel of judges, but she couldn't turn on a light switch. Then came Zambique, a Golden Retriever bred to be calm, reliable, affectionate and to reduce her owner's reliance on other people to complete simple daily tasks. Zambique picks up Savannah's dropped pencils and carries her backpack, all with a wagging tail. But what's more, each night, Savannah has to undergo an hour-long medical procedure. Now, Savannah goes through this procedure bravely and independently, but not alone; she has Zambique always at her side.

Abington - Jefferson Health

Faulkner Family Foundation

According to legend, George W. Elkins, a landowner in Abington Township, often took people injured in area car accidents into Philadelphia for treatment. When one of his passengers died of their injuries on their way, it prompted him to get together with fifty people to raise funds to establish a hospital in Abington. The hospital was dedicated in 1913 as a memorial to Elkins' wife Stella McIntire and opened as Abington Memorial Hospital on May 15, 1914. In October 2014, Abington Health and Jefferson Health, the latter which owns Thomas Jefferson University Hospital, announced an intention to merge. An agreement was reached in January 2015 and the merger was completed on May 4, 2015, resulting in Abington-Jefferson Health.

At Abington-Jefferson Health, they believe that every moment of your life is precious. With two hospitals, a trauma center, two urgent care facilities, five outpatient centers, six sleep labs, twenty radiology and lab testing sites, home care and hospice, Abington-Jefferson Health has fourteen hundred primary care and specialty physicians and six thousand employees all focused on just one goal—keeping their patients and their families healthy for life. In 2015, Abington Memorial Hospital Foundation, now Abington-Jefferson Health, received a generous contribution from the Faulkner Family Foundation, long-time supporters of the hospital.





Alvernia University

Fred and Bonnie Savage Foundation



Edinboro University

Robert III and Joanne Preston Family Foundation



Elizabethtown College

Vicki and Bob Dolan Foundation



Franklin & Marshall College

Jack and Cate Oyler Foundation



Grove City College

Robert and Gail Hunter Foundation



Johnson College

Earle M. Mitchell Memorial Foundation



Kenyon College

Eric and Deborah Hessinger Foundation



Mansfield University

J. Paul and Dusty McMillen Family Foundation



Penn College

William P. and Lorraine Manos Foundation



University of Pennsylvania

Suzi and Scott Lustgarten Family Foundation



Villanova University

Robert P. Kelly Family Foundation



Waynesburg University

Fox Family Foundation



Docs In Progress

William P. and Lorraine Manos Foundation

Docs In Progress creates and fosters a supportive community for documentary filmmakers. By developing, encouraging, and celebrating new and diverse voices in documentary film, they seek to deepen the public's experience, understanding, and appreciation for documentary as a form of art and expression. Docs in Progress offers an array of programs aimed at aspiring and experienced documentary filmmakers and the broader community. In 2015, Docs in Progress received a generous donation from the William P. and Lorraine Manos Foundation.

Erie Philharmonic

Larry and Gloria New Foundation

The history of the Erie Philharmonic began on November 30, 1913, when the Erie Symphonic Orchestra, a 50 piece ensemble under the direction of Franz Kohler, presented a concert of "Sacred Music." The Erie Philharmonic Society was created to sponsor the orchestra, and in 1947 all members of the orchestra were paid union scale wages. The orchestra also became a charter member of the American Symphony Orchestra League in 1942. The 2015-2016 season marks the 102nd Season of the Erie Philharmonic, and the Larry and Gloria New Foundation have been long-time contributors.

Creative York

Giambalvo Family Foundation

Creative York (formerly YorkArts) was founded in 1990 to support local artists in all disciplines and to make the arts accessible to the general public. Creative York continues to nurture imagination, creativity, and innovation in the York community. Their educational outreach programs and first-class facilities in historic downtown York draw success from the arts' unique ability to stimulate, challenge, illuminate, and inspire. After 25 years of serving York County, the organization wanted to dramatically expand its commitment to creativity and arts education. So, Creative York set out on a Capital Campaign to reach a goal of raising \$1.3 million to grow its educational capacity, outreach, and organizational sustainability. With the help of the Giambalvo Family Foundation, they not only met but exceeded the Capital Campaign goal. Creative York continues to raise money to fund expansion and upgrades to their facilities and outreach programs. Their 'Art in the Parks' summer program features activities that teach social skills, respect for others, teamwork, and positive self-expression.



America on Wheels

Greater Lehigh Valley Automobile Dealers Association Foundation

A transportation museum located in Allentown, America on Wheels' collection features over 75 bicycles, motorcycles, automobiles and trucks in exhibits telling the story of people and products on the move from the days of the carriage to the vehicles of tomorrow. A historically important part of the museum's collection is the 1889 Nadig Gas-Powered Carriage, one of the first gas-powered vehicles driven in America. In 2015, America on Wheels received a generous donation from the Greater Lehigh Valley Automobile Dealers Association Foundation.



Braddock Redux

Rob and Christina Cochran Family Foundation

Once a thriving commercial destination amidst the industrial center of steel production in the Monongahela Valley, the small town of Braddock, Pennsylvania suffered through a brutal postindustrial decline in the 1980s. Braddock Redux's founder, John Fetterman, had a vision of a vacant church becoming a center of community activity and positive momentum. He imagined groups of people with wide varieties of skills, knowledge, resources, drive, and abilities sharing ideas and developing collaborative efforts. His vision became Braddock Redux, hosting art programs, employment training, and mentoring for local youth.





Women in Need

Paul K. and Anna E. Shockey Family Foundation

Providing services to victims, survivors and loved ones of individuals who have experienced domestic violence and sexual assault, Women in Need serves Franklin and Fulton County, Pennsylvania.

Lancaster City Police Foundation

James and Virginia Jones Foundation

A safe and secure Lancaster City is vital to everyone in the county. The Lancaster City Police Foundation is patterned on foundations that have been formed in other communities, notably New York City, where a close and active public-police partnership has enhanced public cooperation, educated the public about safety issues, and assisted the police force in improving public safety and security. These organizations have found that by promoting civic interaction with the police and helping to supplement governmental resources, public participants better understand the work of the police and become “invested” in public safety. In 2015, the Lancaster City Police Foundation received a generous contribution from the James and Virginia Jones Foundation.



Christian Legal Aid of Pittsburgh

Greater Pittsburgh Automobile Dealers Association Foundation

Christian Legal Aid of Pittsburgh offers free legal advice, guidance, and prayer regarding civil and family matters to those in the Pittsburgh community whose incomes are at or below federal poverty guidelines. The mission is to provide well-trained attorney volunteers to help meet the legal needs of the indigent in Allegheny County. In 2015, Christian Legal Aid of Pittsburgh received a generous donation from the Greater Pittsburgh Automobile Dealers Association Foundation. The Association’s Foundation also enhanced the greater Pittsburgh community through donations to the United Way of Butler County, Community Foundation for the Alleghenies, the Visiting Nurses Association of Western Pennsylvania, and the Humane Society of Westmoreland County.



United Way

Robert III and Joanne Preston Family Foundation

Robert and Joanne Preston are passionately involved in their local United Way organizations. In 2015, the United Way of Lawrence County and the United Way of Youngstown received generous contributions. In addition, Joanne Preston serves on the Board of Directors for the United Way of Lawrence County, and Preston Auto Group hosted the inaugural Preston Auto Group Golf Outing Fundraiser. The United Way’s goal is to improve lives throughout the region by identifying the most pressing community needs, finding solutions to those needs, and demonstrating how those solutions are making a difference. As the largest privately-funded nonprofit in the world, the United Way creates solutions that build stronger communities. Through their network of regional campaigns, they improve education, strengthen financial stability and make communities healthier.

PAA Scholarships

In 2015, PAA awarded \$215,000 to fifteen students. Eleven students were chosen to receive the scholarships in honor of their demonstrated charitable characteristics and their work to make a positive impact in their communities. Four students were selected who are currently enrolled in, or are seeking enrollment in, an automotive technology program, and who are sponsored by a new car or truck dealer.

Community Service Awards Automotive Technology Awards

Jason Andrews

Jones Dealerships, Lancaster

Miranda Brindza

Sun Motor Cars, Mechanicsburg

Anne Marie DeCarolis

Euro Motorcars Devon

Jordyn Donnelly

Faulkner Honda, Harrisburg

Lydia Harris

Thornton Chevrolet, York

Kyle Lindberg

Hunter Keystone Peterbilt, Lancaster

Hope Radvinski

Hunter Truck Sales, Butler

Emily Strothers

New Holland Auto Group, New Holland

Tabitha Swanson

Moon Township Hyundai, Moon Township

Amber Tavenner

Hanover Toyota, Hanover

Jordan Wagner

Outen Chevrolet of Hamburg

Nicholas Deibler

Faulkner Dodge Ram, Mechanicsburg

Jarrett Sheets

Sherwood Groves, Towanda

Jason Stafford

Contemporary Motor Cars, Erie

Zachary Wright

David Dodge Chrysler Jeep, Glen Mills



Scholarship Fund Contributors

Dealer assistance is needed to grow the PAA Fund so that students who are the children of new car and truck dealership employees and those who desire to become technicians will continue to be able to apply for PAA Scholarships. Below are the 2015 Scholarship Fund Contributors.



#1 Cochran
 ADA of Philadelphia
 ADM Insurance Services
 ADM Marketing
 Autotrader
 B & B Dodge
 Boyer & Ritter
 Brian Middleton
 Bryn Mawr Trust
 Budd Baer Inc.
 CARFAX
 Carriage Trade Auction
 Chevrolet Cadillac of Bloom
 Cindy Cook
 Conrad Siegel
 Craig Scott
 Daniels BMW Mini of Allentown
 Dealertrack Technologies
 Deborah Flaherty
 Ebersole
 Faulkner Buick GMC
 Faulkner Harrisburg
 Faulkner Honda
 Faulkner Mazda Subaru
 Faulkner Nissan
 Faulkner Toyota
 Federated Mutual Ins. Co.
 Fox Ford
 Fred Bentley
 Freysinger Buick GMC
 Fulton Bank
 Gail Faulkner
 Greater Pittsburgh ADA Foundation
 Hanover Toyota
 Helion Automotive Technology
 Highmark
 Hondru Ford
 Horwith Trucks
 Hunter Truck Sales & Service
 Jack Giambalvo Motor Company
 Jennings Chevrolet Buick
 Jim Hildebolt

John Putzier
 Jones Dealerships
 Jupiter Tag & Title
 Kelly Fromuth
 Klick-Lewis
 L&L Ford
 L.B. Smith
 Lawrence Chevrolet
 Legacy Truck Centers Inc.
 M&T Bank
 Manheim, Inc.
 Mark Zukowski
 Matt and Karen Clark
 Maxim Automotive Products
 Members 1st
 Metro Bank
 Mid-State
 Michael Smith
 Minooka Motor Sales
 Mitchell Unis
 Montrose Buick GMC Cadillac
 Nevin Burns
 Outten Dealerships
 Peter Bauer
 Phillips Office Solutions
 Protective Asset Protection
 Renee Derenzo
 Rentschler Chevrolet
 Rick Quigley
 S&T Bank
 Scott Cars
 Sheila Horwith
 Shults Ford Lincoln
 Steven Smith
 Sunoco
 SunTrust Bank
 Sutliff Auto Group
 Thomas Buick GMC Truck
 Thomas Rohrich
 Tom Freysinger
 Tom Kwiatek
 Tom Noerr

Turner Hydraulic
 Unifirst
 Vanguard Cleaning Services
 Warren Lewis
 West German BMW
 Whitmoyer Auto Group
 Wind Gap Chevrolet
 Wynn Group

Grants Distributed

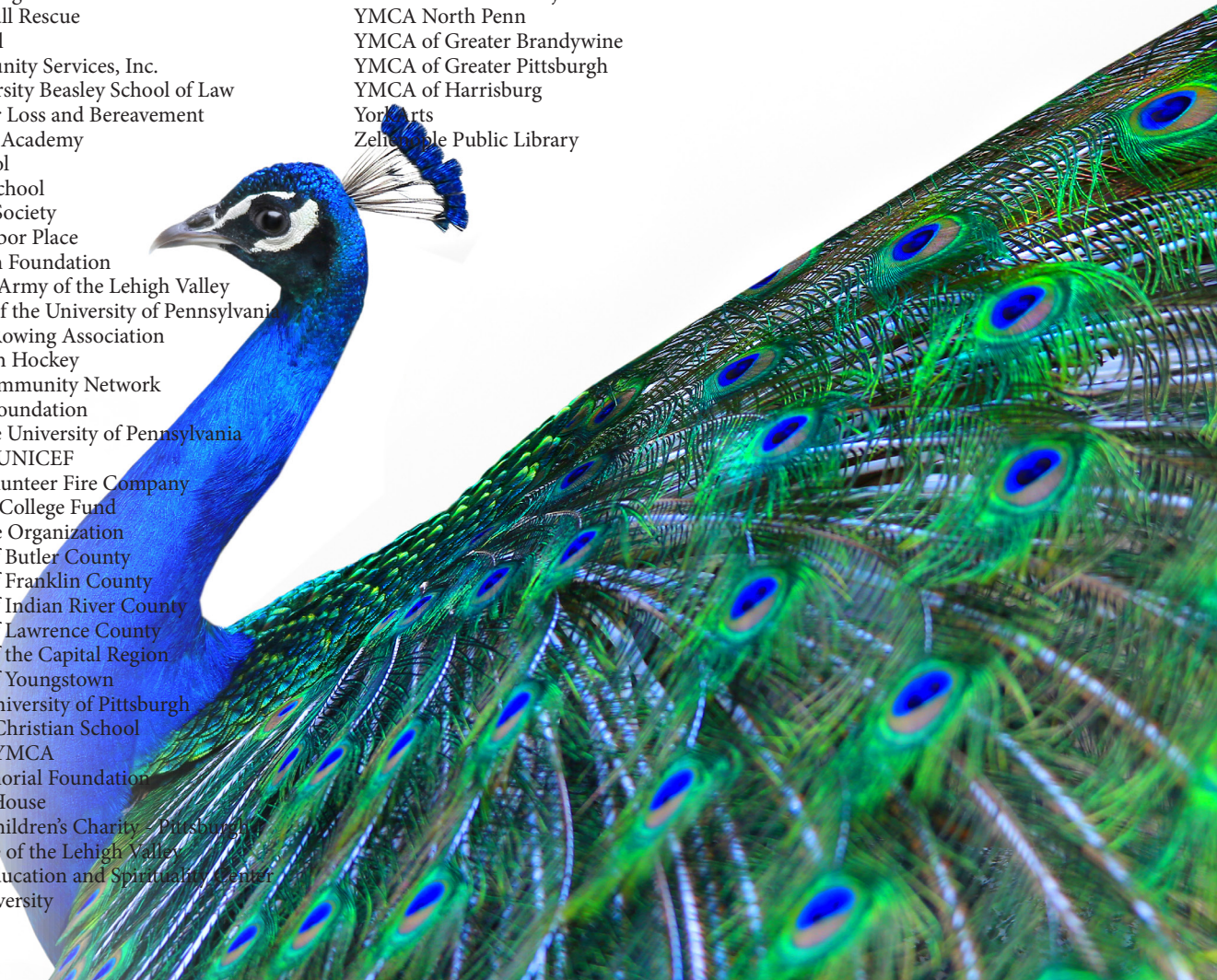
Organizations receiving assistance from the PAA Foundation in 2015

AACA Museum	Camelot for Children Inc.	Erie County Historical Society	Junior Achievement of NEPA
Aaron's Acres	Canine Companions for Independence	Erie Philharmonic	Juvenile Diabetes Research Foundation
Abington Friends School	Carnegie Museums of Pittsburgh	Family Connection of Easton, Inc.	Kate Svitek Memorial Foundation
Abington Memorial Hospital	Catholic Charities of Pittsburgh	Father Chucks Challenge	Kennedyville Volunteer Fire Company
Adult Skills Quest	Catholic Charities of the Diocese of Pittsburgh	Father's Heart Ministries	Kenyon College
Alex's Lemonade Stand Foundation	Catholic Foundation of Erie	First United Methodist Church	Kiwanis Foundation of Palmer
Allegheny Riverstone Center for the Arts	Cato Institute	Fisher House Foundation	Krysta Hankee Memorial Fund
Allentown Central Catholic HS	Center for Animal Health & Welfare	Flagship Niagara League	Lake George Land Conservancy
Allentown Pennsylvania Public Library	Center for Resolutions	Foundation for the Lupus Center of Excellence	Lancaster Area Habitat for Humanity
Allentown Rescue Mission	Center for Vision Loss	Fox Chase Cancer Center	Lancaster City Police Foundation
Allison-Antrim Museum	Central Bucks Family YMCA	Franklin and Marshall College	Lancaster County Career & Technology
ALS Association	Central Pennsylvania Food Bank	Franklin County Historical Society - Kittochtinny	Lancaster Education Foundation
Alternative Living Solutions	Challenges Center, New Castle	Friends of Father Judge High School	Lancaster Farmland Trust
Alvernia University	Chesapeake Bay Foundation	Friends of New Castle Public Library	Lawrence County Humane Society
Alzheimer's Disease Research	Children's Home of Easton	Fueled Up & Fired Up Foundation Inc.	Lehigh County Humane Society
America on Wheels	Children's Home of York	Fulton County Library	Lehigh University - Athletics
American Cancer Society	Children's Hospital of Pittsburgh Foundation	Galena Volunteer Fire Department	Lehigh Valley Amputee Support Group
American Diabetes Association	Christian Legal Aid of Pittsburgh, Inc.	Gifford Youth Achievement Center	Lehigh Valley Health Network
American Heart Association	Cliffs Residents Outreach	Gladiolus Learning and Development Center	Lehigh Valley Military Affairs Council
American Red Cross	Colonial Williamsburg Foundation	Good Samaritan Health Services Foundation	Leukemia & Lymphoma Society
American Transplant Foundation	Communities in Schools of the Lehigh Valley	Good Shepherd Rehabilitation	Library System of Lancaster County
Angel 34	Community Foundation for the Alleghenies	Goodwill Keystone Area	Lifepath Foundation
Animal Friends	Community Foundation of W. PA and E. Ohio	Grace Seed Inc.	Lower Bucks Family YMCA
Arts & Education at the Hoyt	Community Music School	Grace United Methodist Church - Lewistown	Lupus Foundation of America
Assumption BVM Church	Community Park Association	Greater Pitts. Automobile Dealers Foundation	Make-A-Wish
Audubon YMCA	Community YMCA of Eastern Delaware County	Greater Valley YMCA	Manheim Township Educational
Autism Society	Concordia Luthern Ministries	Greencastle-Antrim Education Foundation	Mansfield University Foundation
Autism Speaks	Conestoga Valley Education Foundation	Grove City College	Margaret Donnelly O'Connor Education
Auto Dealers CARing for Kids Foundation	Connoquenessing Valley Community Chest	Hamot Health Foundation	MCREE
Bair Foundation of PA	Cray Youth & Family Services	Hands-on House	MCIU Education Foundation
Baldwin United Presbyterian Church	Crisis Shelter Lawrence County	Harrisburg Symphony Association	Meals on Wheels of Northampton County
Beckoning Cat Project	Cultural Alliance of York County	Heidelberg United Church of Christ	Meow House
Benedictine Sisters of Erie	Cumberland County Historical Society	Heritage Foundation	Mercersburg Academy
Bethany Childrens Home	Cystic Fibrosis Foundation	Hershey Jr. Bears	Mercersburg Area Council for Wellness
Big Brothers & Big Sisters	Davidson College	Hershey Palmyra Sertoma Club	Mercy Center for Women
Blue Ridge Summit Free Library	DeSales University	Hillel Foundation of the University of Miami	Mercy School for Special Learning
Borough of North Braddock	Diakon Youth Services	Hospice of Central PA	Miami University Foundation
Boy Scout Troop 86	Docs in Progress	Hospice of Washington County	Millersville Community Church
Boy Scouts of America	Dress for Success - South Central PA	Hoyt Center for the Arts	Minsi Trails Council, BSA
Boys & Girls Club of Allentown	East Hempfield Township K-9 Unit	Humane League of Lancaster County	Miracle League of Northampton
Boys & Girls Club of Bethlehem	East Petersburg Fire Company	Humane Society of Vero Beach	Miracle League of the Lehigh Valley
Boys & Girls Club of Easton	Easter Seals of Eastern PA	Humane Society of Westmoreland County	Misericordia Nursing and Rehab
Boys & Girls Club of Erie	Eau Claire Volunteer Fire Department	Indian River County Habitat for Humanity	Mission Kids Child Advocacy Center of
Boys & Girls Club of Indian River	Edinboro Univesity	Indian River Medical Center Foundation	Montgomery County
Boys Town	Elizabethtown College	International Relief Teams	Missionaries of the Sacred Heart
Braddock Redux	Elmwood Park Zoo	IronPigs Charities	Moniteau Scholarship Foundation
Braddock's Battlefield History Center	Elwyn	Jameson Health Care Foundation	Monroeville Arts Council
Burn Prevention Foundation	Embrace Your Dreams	Jeannette Midget Athletic Association	Montgomery County SPCA
Butler Area Public Library	Emmaus Rotary Club Foundation	Jefferson Regional Medical Center Foundation	Moravian Academy
Butler County Family YMCA	Epilepsy Foundation	Jerome R. King Playground Association	Mount Ebal Missionary Baptist Church
Butler County Humane Society	Erie Arts & Culture Campaign	Jewish Federation of Greater Philadelphia	Muscular Dystrophy Association
Butler County Symphony Association	Erie City Mission	Johns Hopkins Medicine	Nam Knights Lehigh Valley Chapter
Butler Health System Foundation	Erie County Diabetes Association	Johnson College	

National Civil War Museum
National Multiple Sclerosis Society
Nazareth Blue Eagle Education Foundation
Ned Smith Center for Nature and Art
Nemours Foundation
New Castle Branch - NAACP
New Castle Rotary International
New Castle YMCA
Newtown Square Presbyterian Church
Nobodys Cats Foundation
Northern Lehigh Event Committee
Northern Lehigh High School
Northern Lehigh Playground Assoc.
Notre Dame High School
Operation Homefront
Operation Warm
Our Father's Table Soup Kitchen
PA Museums
PA State Police - HEMC
PACC Caring Cupboard
Palmyra Citizens Fire Co.
Pediatric Hydrocephalus Foundation
Penn College Foundation
Penn State Hershey
Pennsylvania Coalition Against Rape
Pennsylvania Heritage Foundation
Pennsylvania State University - MBA Program
Pennsylvania Wounded Warriors
Pennypack Ecological Restoration Trust
Perry Hi-way Hose Co., Inc.
Philadelphia Academies, Inc.
Philadelphia Freedom Valley YMCA
PHN Charitable Foundation
Pinebrook Family Answers
Polar Bear Foundation
Potentials Foundation - A Cause for Chloe
Pottstown Mercury Foundation
Project ALS
Prostate Cancer Awareness Fund
Public Broadcasting of Northwestern PA, Inc.
Regina Academy at St. John the Baptist
Rescue Hose Co. 1
Roman Catholic Diocese of Pittsburgh Foundation
Royal Family Kids Camp of Lawrence County
Sacred Heart Foundation
Safenet Domestic Violence Safety Network
Salvation Army
Sanibel Captiva Rotary Trust Fund
Scholarship Foundation of the Rotary Club of Erie
Schreiber Pediatric of Lancaster County
Scleroderma Foundation
Seasons Hospice & Palliative Care of PA
Senior Adult Activities Center of Montgomery County
Shenango High School
Shipley School

Shippensburg University Foundation
Shriners Hospital for Children - Erie
Sigma Tau Gamma Foundation
Skills USA Council
Slatington Public Library
Special Olympics of Bethlehem
St. Bernadette Catholic Parish
St. Dennis Church
St. Eleanor Catholic Church
St. Gregory Parish
St. Jane's CYO
St. John Neumann Regional Academy
St. Jude Children's Research Hospital
St. Jude the Apostle Church
St. Margaret Foundation
St. Michael the Archangel School
St. Paul's Neighborhood Free Clinic
Stony Creek Anglers
Sunrays Pit Bull Rescue
Sunrise School
Tabor Community Services, Inc.
Temple University Beasley School of Law
The Center for Loss and Bereavement
The Episcopal Academy
The Hill School
The Hillside School
The Humane Society
The Mix at Arbor Place
The Pittsburgh Foundation
The Salvation Army of the Lehigh Valley
The Trustees of the University of Pennsylvania
Three Rivers Rowing Association
Thunder Youth Hockey
TriCounty Community Network
Troops First Foundation
Trustees of the University of Pennsylvania
U.S. Fund for UNICEF
Unionville Volunteer Fire Company
United Negro College Fund
United Service Organization
United Way of Butler County
United Way of Franklin County
United Way of Indian River County
United Way of Lawrence County
United Way of the Capital Region
United Way of Youngstown
UPMC and University of Pittsburgh
Upper Bucks Christian School
Upper Bucks YMCA
US Navy Memorial Foundation
Valley Youth House
Variety The Children's Charity - Pittsburgh
Victory House of the Lehigh Valley
Villa Maria Education and Spirituality Center
Villanova University

VisionCorps
VNA & Hospice Foundation
VNA of Western Pennsylvania
Volunteer Center of Lehigh Valley
Wallingford Presbyterian Church
Warner University
Warwick Education Foundation
Waynesboro Area Gala Cancer Auction, Inc.
Waynesburg University
Wetherill School
Whitaker Center for Science and the Arts
WITF Public Media Center
Women in Need
Women's Resource Center - NEPA
Woods Services
Wounded Warrior Project
YMCA North Penn
YMCA of Greater Brandywine
YMCA of Greater Pittsburgh
YMCA of Harrisburg
York Arts
Zehrer Public Library



Foundation Account Holders

Platinum Legacy Account



Paul K. and Anna E. Shockey Family Foundation

Legacy Account



Auto Dealers CARing For Kids Foundation



Faulkner Family Foundation

Legacy Account



Joseph and Mary Faulkner Family Foundation



Judy Faulkner and Art Riexinger Foundation*



Robert III and Joanne Preston Family Foundation



Robert P. Kelly Family Foundation



Suzi and Scott Lustgarten Family Foundation

** Denotes New Account*

Cornerstone Account



Greater Lehigh Valley Automobile
Dealers Association Foundation



Greater Pittsburgh Automobile
Dealers Foundation

Humanitarian Account



Deborah Numrich Campbell Foundation



Greg and Susan Sutliff Foundation



Landis Family Charity Foundation

Humanitarian Account



William P. and Lorraine Manos
Foundation



Jim Wynn ~ Forever in our lives
Wynn Family Foundation

Founder's Account



Ann Harris Smith Foundation for
Gynecological Cancer Awareness



Blaise Alexander
Family Foundation



Bruce and Dotty Allen
Family Foundation



Craig and Susan Scott
Foundation

Founder's Account



Earle M. Mitchell
Memorial Foundation



Fred and Bonnie Savage
Foundation



Giambalvo Family
Foundation



John and Loriann Putzier
Foundation



John S. Oyler Foundation



Larry and Gloria New
Foundation



Lydia M. Oyler
Memorial Foundation



MAC Chapman Family
Foundation



Rentschler Chevrolet Chrysler Jeep Dodge Foundation
(Fred and Gloria Rentschler, Richard and Faye Rentschler)



Rob and Christina Cochran
Family Foundation



Robert and Gail Hunter
Foundation

Founder's Account



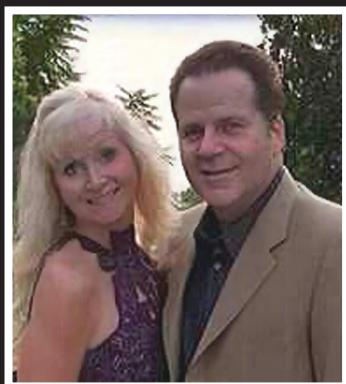
Rolan E. and Patricia H.
Ferris Foundation



Steve and Donna Jones Foundation



Sullivan Numrich Family Foundation



Three Little Angels Foundation

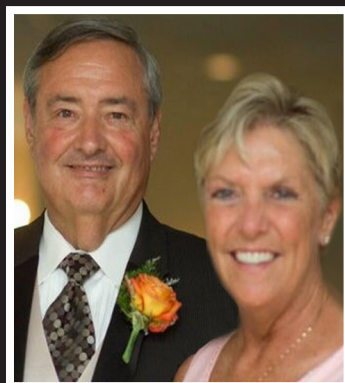


Wind Gap Chevrolet Buick Foundation
(Bryan Gault and Jeff Baskin)

Regency Account



Allan and Barbara Jennings
Family Foundation



Bill and Donna Lake
Family Foundation



Biondi Family Foundation



Clarence and Ellen Smail
Foundation

Regency Account



David and Megan Oyler
Foundation



David and Patricia Penske
Foundation



Duke and Melissa Scott
Family Foundation



Eric and Deborah Hessinger
Foundation*



Fox Family Foundation



Gregg and Jenny Semel
Foundation



J.L. Freed Foundation
(Don and Suzanne Franks)



J. Paul and Dusty McMillen
Family Foundation



Jack and Cate Oyler
Foundation



James and Virginia Jones
Foundation



Joseph and Karen Thurby
Family Foundation

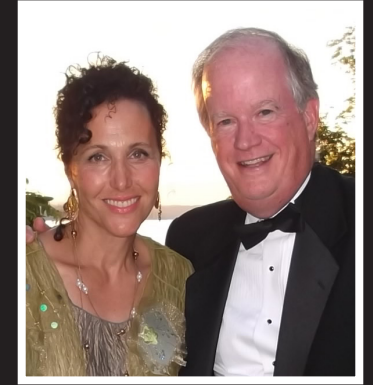
Regency Account



Kenneth J. Lustgarten Foundation
(Peter Lustgarten, Stuart Lustgarten)



Kermit and Clarisse
Hicks Foundation



Middleton Family Foundation



Mummert Family
Foundation *



Sterling Baugher Family Fund
(Sarabelle, Cindy and Larry Baugher)



The Third Day Fund



Thomas and Frances Rohrich
Foundation



Vicki and Bob Dolan
Foundation



Warren Lewis Family
Foundation

** Denotes New Account*

Benefactor Club



Andy and Carol Scott
Fund



Angela and Harry Faulkner
Family Fund *



Benson Family Fund



Berger Family Fund
(Jacqueline and Earl Berger, Cheryl and Jeff Berger)



Casey Fund*



Edward and Jane
Noerr Fund



Grant and Juliet Perry
Family Fund *



James and Michele
Peruto Fund



Salezze Family Fund



Shuman Family Fund



Thomas and Cheryl
Leydig Fund



Thomas and Marge
Noerr Fund

Not Pictured:
Allen Family Foundation*
Allen Wenger Foundation*
Christina M. Savage Memorial Foundation*
D'Agata Family Foundation*
John and Dita Daub Fund
Thomas Family Foundation

** Denotes New Account*

Financials

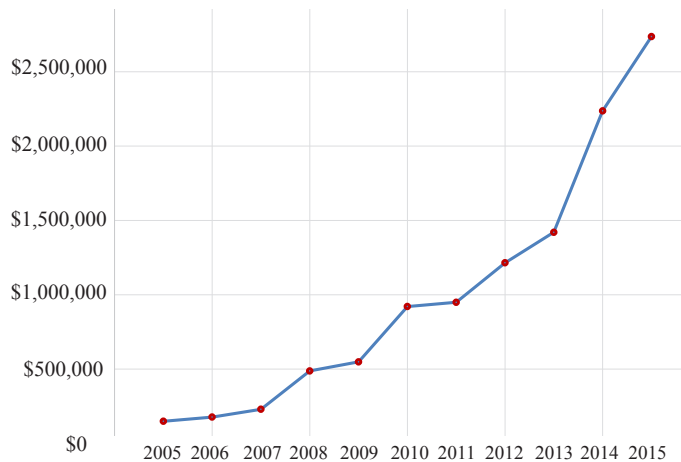
Balance Sheet Summary

Donor-Advised Accounts	\$28,945,291
Undesignated Account	12,643,399
CARing for Kids Account	4,232,966
Benefactor Club Accounts	<u>144,000</u>
Total	\$45,965,656

Increase in # of Established Accounts

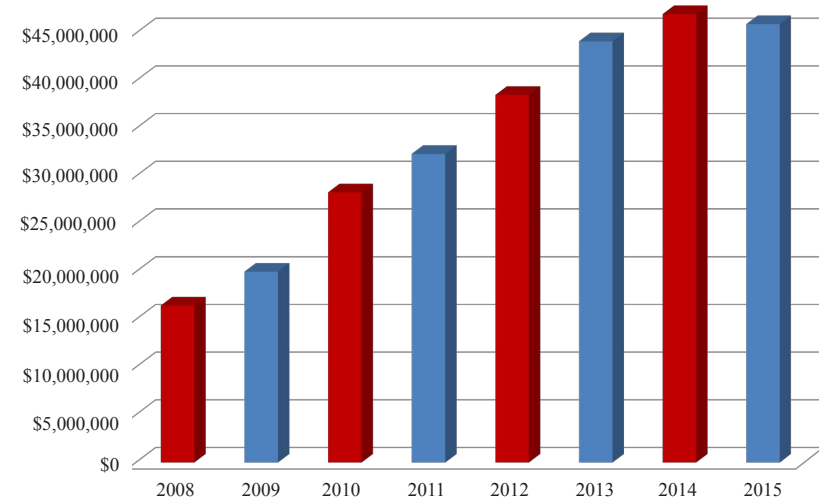
2015	79
2014	67
2013	58
2012	55
2011	48
2010	40
2009	33

Increase in Grants Distributed to Charities by Year



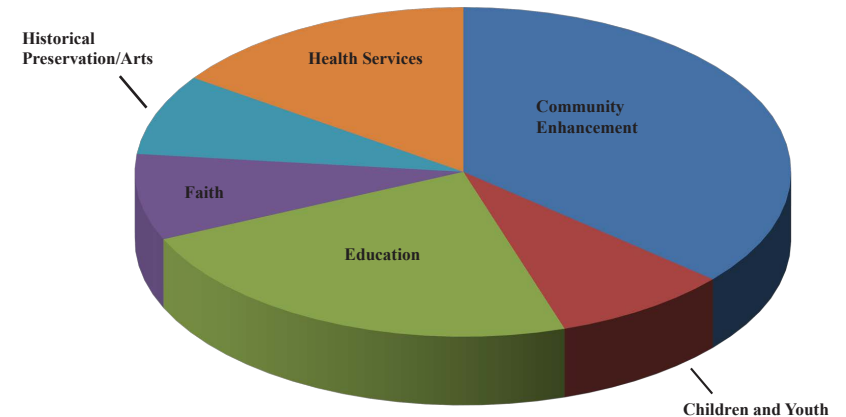
2015	\$2,736,455
2014	\$2,235,126
2013	\$1,400,491
2012	\$1,215,197
2011	\$949,575
2010	\$921,179
2009	\$549,065
2008	\$488,106
2007	\$230,000
2006	\$177,500
2005	\$149,250

Fund Balance Growth



Grant Totals by Category

Community Enhancement	\$993,200
Children and Youth	238,725
Education	636,750
Faith	231,150
Historical Preservation/ Arts	217,100
Health Services	<u>419,530</u>
Total	\$ 2,736,455





Platinum Legacy Account \$10 million +

Paul K. and Anna E. Shockey Family Foundation

Legacy Account \$1 million to \$5 million

CARing For Kids Foundation - Custodial Account
Faulkner Family Foundation
Joseph and Mary Faulkner Family Foundation
Judy Faulkner and Art Riexinger Foundation
Robert III and Joanne Preston Family Foundation
Robert P. Kelly Family Foundation
Suzi and Scott Lustgarten Family Foundation

Cornerstone Account \$500,000 to \$1 million

Greater Lehigh Valley Automobile Dealers Association Foundation
Greater Pittsburgh Automobile Dealers Association Foundation

Humanitarian Account \$250,000 to \$500,000

Deborah Numrich Campbell Foundation
Greg and Susan Sutliff Foundation
Landis Family Charity Foundation
William P. and Lorraine Manos Foundation
Wynn Family Foundation

Founder's Account \$100,000 to \$250,000

Allen Family Foundation
Ann Harris Smith Foundation for Gynecological Cancer Awareness
Blaise Alexander Family Foundation
Bruce and Dotty Allen Family Foundation
Christina M. Savage Memorial Foundation
Craig and Susan Scott Foundation
Earle M. Mitchell Memorial Foundation
Fred and Bonnie Savage Foundation
Giambalvo Family Foundation
John and Loriann Putzier Foundation
John S. Oyler Foundation
Larry and Gloria New Foundation
Lydia M. Oyler Memorial Foundation
MAC Chapman Family Foundation
PAA Fund
Renstschler Chevrolet Chrysler Jeep Dodge Foundation
Rob and Christina Cochran Family Foundation
Robert and Gail Hunter Foundation
Rolen E. and Patricia H. Ferris Foundation
Steven and Donna Jones Family Foundation
Sullivan Numrich Family Foundation
Thomas Family Foundation
Three Little Angels Foundation
Wind Gap Chevrolet Buick Foundation

Regency Account \$25,000 to \$100,000

Allan and Barbara Jennings Family Foundation
Allen Wenger Foundation
Bill and Donna Lake Family Foundation
Biondi Family Foundation
Clarence and Ellen Smail Foundation
D'Agata Family Foundation
David and Megan Oyler Foundation
David and Patricia Penske Foundation
Duke and Melissa Scott Family Foundation
Eric and Deborah Hessinger Foundation
Fox Family Foundation
Gregg and Jenny Semel Foundation
J.L. Freed Foundation
J. Paul and Dusty McMillen Family Foundation
Jack and Cate Oyler Foundation
James and Virginia Jones Foundation
Joseph and Karen Thurby Family Foundation
Kenneth J. Lustgarten Foundation
Kermit and Clarisse Hicks Foundation
Middleton Family Foundation
Mummert Family Foundation
Sterling E. Baugher Family Fund
The Third Day Fund
Thomas and Frances Rohrich Foundation
Vicki and Bob Dolan Foundation
Warren Lewis Family Foundation

Benefactor's Club \$10,000 to \$25,000

Andy and Carol Scott Fund
Angela and Harry Faulkner Family Fund
Benson Family Fund
Berger Family Fund
Casey Fund
Edward and Jane Noerr Fund
Grant and Juliet Perry Family Fund
James and Michele Peruto Fund
John and Dita Daub Fund
Salezze Family Fund
Shuman Family Fund
Thomas and Cheryl Leydig Fund
Thomas and Marge Noerr Fund



1925 North Front Street, Harrisburg, PA 17102

1-800-242-3745 www.paa-foundation.org

The official registration and financial information of the Pennsylvania Automotive Association Foundation may be obtained from the Pennsylvania Department of State by calling toll free, within Pennsylvania, 1 (800) 732-0999. Registration does not imply endorsement.