

*imagine*  
*the good you can do*





# President's Message

Dear friends,

As you review our 2016 Annual Report, we ask you to imagine the good you could do in your own community, supporting the causes and organizations that matter most to you. In 2016, PAA Foundation (PAAF) account holders granted more than \$2.1 million, building hospitals, funding schools, inspiring the arts and giving hope to those in need. As you read their stories, I ask you to imagine the many ways you could get involved and make a difference.

I am extremely proud of the growth of the foundation over the past ten years. We have nearly \$50 million invested and eighty-two established accounts allocating money to organizations in need. As we look to the next ten years, I anticipate even more interest in the PAAF as a resource for giving. And, though I will no longer be acting as the Foundation's President, my interest in promoting the benefits of establishing an account will continue. As a final plea, I ask you to read our report and consider making this the year you open an account within the PAA Foundation.

**J. Paul McMillen, 2016 President**

Friends and Colleagues,

It is with great excitement that we look to the future of the PAA Foundation. When Paul McMillen retired as President of the Pennsylvania Automotive Association in 2010, he was kind enough to stay on as President of the Foundation for an additional six years. No one has been more devoted to the success of the Foundation or worked harder to ensure the culmination of the vision of the PAAF Board of Trustees than Paul. It is our hope that in the next ten years, we can continue to grow in number of established accounts and in dollars invested, because ultimately that means more money is funneled into the community, illustrating the generosity of our members.

Our primary focus, our goal from the very beginning, has been to encourage and recognize the charitable giving of new car and truck dealers in Pennsylvania and provide opportunities for dealers to give back to the communities that supported them. We look forward to working with you and encourage you to get involved.



**John Devlin, 2017 President**  
**Kelly Fromuth, Executive Director**

## Table of Contents

Chairman's Message	03
Children & Youth	04-05
Health Services	06-07
Education	08-09
Community Enhancement	10-11
History and the Arts	12-13
PAA Scholarships	14-15
Account Holders	16-24
Financials	25
Grants Distributed	26-27

## 2016 Board of Trustees

**David B. Penske, Chairman**  
Penske Buick GMC Trucks, Inc.  
Shillington

**John Oyler, Treasurer**  
The Faulkner Organization  
Trevose

**Steven G. Jones, Secretary**  
Jones Dealerships  
Lancaster

PAA Chairman, Ex-Officio  
**Mark Fox**  
Fox Ford, Waynesburg

PAA President, Ex-Officio  
**John Devlin**

# Chairman's Message

Dear Friends,

It is my pleasure to offer you the 2016 PAA Foundation Annual Report. Contained within is not only information on the many worthwhile organizations receiving donations from account holders, but also stories explaining the reasons behind those gifts. We hope that as you read this report you are inspired to find the causes and organizations that matter most to you and to imagine the good you can do.

Those with charitable intent are encouraged to take advantage of establishing a PAAF Donor Advised Account. A philanthropic tool, PAAF makes it easy to support the charities you choose.

If you would like to contribute but do not want to take part in one of the established *Giving Recognition Levels*, a donation in any amount can always be made to the PAA Scholarship Fund.

As you will see, 2016 was another productive year for the PAA Foundation. The Foundation continues to experience growth and is welcoming new account holders. Last year, over \$2.1 million was granted to various charitable organizations by PAAF Donor Advised and Benefactor Club account holders. I encourage you to consider joining us.

Pennsylvania dealers care about their communities, and it shows. We commend the good work you are doing and look forward to another successful year!



PAAF Chairman David B. Penske  
Penske Buick GMC Trucks, Inc.  
Shillington



**Blaise Alexander**  
Alexander Family Dealerships  
Montoursville

**Deborah Numrich Campbell**  
Day Automotive Group  
Monroeville

**Robert Cochran**  
#1 Cochran  
Monroeville

**Cindy Cook**  
Jim Wynn Volkswagen Volvo, Inc.  
Norristown

**Robert J. Dolan**  
Conrad Siegel Actuaries  
Harrisburg

**Kermit G. Hicks**  
Greencastle

**Robert L. Hunter**  
Hunter's Truck Sales and Service  
Butler

**Allan E. Jennings**  
Jennings Chevrolet Buick  
Chambersburg

**Scott Lustgarten**  
Martin Dealerships  
Ardmore

**William P. Manos**  
Fairfield Auto Group, Inc.  
Montoursville

**Fred Savage**  
Savage Automotive Group  
Shillington

**Craig C. Scott**  
Scott Honda of West Chester  
West Chester

**Kenneth B. Shockey**  
Greencastle

**Michael B. Smith**  
Laurel Auto Group  
Johnstown





## Operation Warm

### Auto Dealers CARing for Kids Foundation

In 2016, the Auto Dealers CARing for Kids Foundation distributed 45,070 new winter coats to underprivileged children living in the five-county region of Philadelphia through its Driving Away the Cold program. "This is extremely important because so many of our children live in circumstances of poverty and things like coats become a challenge for some families," Dr. William Hite, Superintendent of the School District of Philadelphia, says.

Participating dealers purchase new coats from the national nonprofit Operation Warm and distribute them either through a charity of their choice or through the YMCA and Philadelphia school districts. "It's a great example of public and private, small businesses, and community organizations working together with one common goal, which is to provide a new coat and have these kids be warm," Executive Director Kevin Mazzucola says.

The CARing for Kids Foundation launched Driving Away the Cold in 2008 as a program that would engage dealers and would fill a need in the community. 175 Philadelphia area auto dealers work together to make Driving Away the Cold a success. To date, the dealers have distributed a total of 265,252 coats, valued at \$4.3 million.

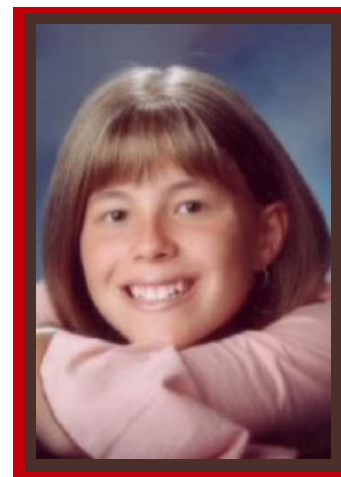
The Auto Dealers CARing for Kids Foundation also gave generously in 2016 to area YMCAs and Philadelphia Academies.



## Angel 34

### Greater Lehigh Valley Automobile Dealers Association Foundation

Among the many grants distributed by the Greater Lehigh Valley Automobile Dealer's Association in 2016, the organization donated to Angel 34. During her battle with cancer Nicole, a student at Northampton High School, was always looking for ways to help ease her own pain, but was also concerned for the other children going through the same journey. She would take the time to talk to other children about procedures that they would soon go through or about the positive side of wearing a wig. She also found the time to hand out stuffed animals to children while going through her daily treatments. When Nicole established her foundation, Angel 34, she wanted to make sure that every child received the same care she had received and that there were enough nurses and staff to support them. Each year, the Angel 34 Foundation provides Medical Arts Scholarships to graduating seniors. "You never know who will have the answer for the cure or a new way to treat cancer," said Nicole. In addition to scholarships, Angel 34 works to establish services where cancer patients see a need. It forms support groups, advises on doctor/patient enhancements and tactics, and educates and advocates to those who provide funding for cancer research.



Nicole Elizabeth Sheriff  
April 14, 1989 - May 3, 2004

## Young Life

### Stuckey Family Foundation

Young Life began with a few simple ideas about sharing the truth of God's love with adolescents. Seven decades later, those simple ideas have become time-tested methods for reaching out to middle school, high school and college students in friendship and hope. At Young Life, they believe kids' lives are dramatically influenced when caring adults come alongside them, sharing God's love with them. Because their Young Life leader believes in them, they begin to see that their lives have great worth, meaning and purpose. Young Life has ministries in 6,936 schools and other outreach locations, as well as 68,385 volunteers in the United States and around the world making an impact on almost two million kids. In 2016, Young Life received a contribution from the Stuckey Family Foundation.

## Gladiolus Learning and Development Center

### Craig and Susan Scott Foundation

In 2016, Gladiolus Learning and Development Center (GLAD) received a generous contribution from the Craig and Susan Scott Foundation. Gladiolus Learning and Development Center is a nationally accredited preschool learning environment in Fort Myers, Florida, providing educational and developmental care for low-income working families. It is their goal to ensure that all children go on to public school understanding and communicating in English. The importance of education is stressed and families are encouraged to stay involved with their child's education to break the cycle of poverty through pursuing higher education. Mr. Craig Scott serves as the Chairman of the Board of Directors for GLAD.



## Multiple Myeloma Research Foundation

**Giambalvo Family Foundation**

Multiple myeloma is a type of blood cancer that affects the plasma cells. In multiple myeloma, malignant plasma cells accumulate in the bone marrow, crowding out the normal plasma cells that help fight infections. These malignant plasma cells then produce abnormal proteins which may cause tumors, damage the kidneys, and impair immune system function. In some cases, the malignant cells may cause a single tumor, called a solitary plasmacytoma, but if multiple tumors are formed, then the disease is called multiple myeloma.

Multiple myeloma is the second most common blood cancer, and although it is considered incurable, it is very much a treatable disease thanks to recent advancements in cancer research. Historically, there was little hope for multiple myeloma patients, because multiple myeloma treatment options were incredibly limited. The Multiple Myeloma Research Foundation, however, has revolutionized the way multiple myeloma is treated, substantially improving the life expectancy of multiple myeloma patients. Since its inception, the foundation has helped introduce ten new drugs and through the power of new technology, genomics, and immunology, lives are now being saved. In 2016, Multiple Myeloma Research Foundation received a contribution from the Giambalvo Family Foundation to continue their important, life-saving work.



## Pediatric Hydrocephalus Foundation

**Fred and Bonnie Savage Foundation**

The mission of the Pediatric Hydrocephalus Foundation is to educate the community by raising the level of awareness about this brain condition. The Pediatric Hydrocephalus Foundation also provides support to the families, friends and children who are diagnosed with Hydrocephalus. The foundation raises money for and works with the medical community in searching for a cure and additional treatment options. Since 2010, the Pediatric Hydrocephalus Foundation has awarded \$401,226 in grants and donations to Hospitals, Neuroscience Institutes, and Medical Research Centers and Advocacy Organizations for research, education and patient support. In 2016, the Pediatric Hydrocephalus Foundation received a generous contribution from the Fred and Bonnie Savage Foundation.

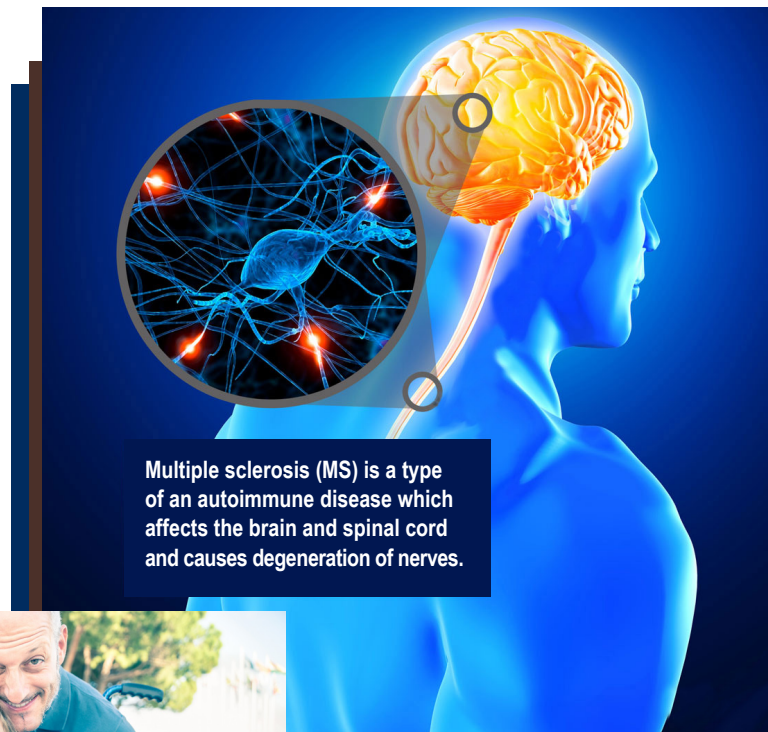




## National Multiple Sclerosis Society

### Suzi and Scott Lustgarten Family Foundation

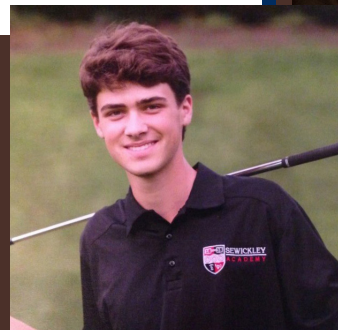
In 2016, the National Multiple Sclerosis Society received a donation from the Suzi and Scott Lustgarten Family Foundation. MS is thought to affect more than 2.3 million people worldwide. MS symptoms are variable and unpredictable. No two people have exactly the same symptoms, and each person's symptoms can change or fluctuate over time. Last year, the Society invested \$54 million to advance more than 380 research projects around the world. Through its comprehensive nation-wide network of services, the Society also invested \$122.2 million to help more than one million individuals affected by MS connect to the people, information and resources needed to live their best lives. The Suzi and Scott Lustgarten Family Foundation also gave generously to the Children's Hospital of Philadelphia, University of Pennsylvania Hospital, the University of Miami Hillel, and the Mission Kids Child Advocacy Center.



## Juvenile Diabetes Research Foundation

### Clarence and Ellen Smail Foundation

Millions of people around the world live with type 1 diabetes, including Ellen and Bud Smail's grandson. Type 1 diabetes is a life-threatening autoimmune disease that strikes both children and adults. There is no way to prevent it, and at present, no cure. Juvenile Diabetes Research Foundation works to change this by amassing grassroots support, deep scientific knowledge and strong industry and academic partnerships to fund research. The organization was founded in the New York area in 1970 as the Juvenile Diabetes Foundation. Led by Lee Ducat, a group of local parents of children with juvenile diabetes mobilized to raise money for diabetes research, and formed the first chapter. Today, Juvenile Diabetes Research Foundation is sponsoring \$530 million in scientific research in 17 countries. Thanks to better therapies, which foundation funding has been instrumental in developing, people with diabetes live longer and stay healthier while they await a cure. In 2016, the Juvenile Diabetes Research Foundation received a generous donation from the Clarence and Ellen Smail Foundation.



**Ellen and Bud Smail**  
Smail Auto Group  
Greensburg

# Carnegie Mellon University

## Rob and Christina Cochran Family Foundation

According to Mr. Rob Cochran, the most valuable lesson he learned at Carnegie Mellon University came on his last day as an undergraduate. Speaking at commencement, then-President Richard Cyert told the Class of 1987, ‘I would encourage you to dare to disturb the universe. Don’t be a meek soul, don’t just go along with the flow, make an influence.’ Following graduation, Mr. Rob Cochran joined the family business and was appointed president and CEO in 1992. He has remained active in CMU’s campus life. Five years ago, he established an endowment to provide financial support to the university’s Enactus initiative, which is part of a global effort to connect business and education with service to better communities around the world. “This is something I’m really proud of,” he said. “It promotes thinking differently, and I think the biggest influence CMU had on me was in the way they helped shape my thinking. I think a lot of that road-less-traveled thought process relates back to CMU for me.” In 2016, the Rob and Christina Cochran Family Foundation gave generously to Carnegie Mellon University. The University is known for its world-class, interdisciplinary programs: arts, business, computing, engineering, humanities, policy and science.



**Robert Cochran**  
#1 Cochran  
Monroeville

# Lancaster County Career and Technical Center

## Allen Family Foundation

Lancaster County Career & Technology Center is at the forefront of “college and career readiness.” With over 50 programs representing high-priority occupations throughout Lancaster County, the career and technical center helps fulfill the need for workers in high-skill, high-wage, high-demand areas. The vocational technical school offers an automotive program that prepares students to work in automotive dealerships. All transportation technology students earn national skills certificates,



successfully transition into a first career job or related post-secondary training, and become proficient in their major, demonstrating proficiency through hands-on performance and theoretical testing. Automotive technology students work side by side with experienced automotive technicians. Through the program, the students experience the thrill of diagnosing the complex computer programs and mechanical systems in today’s vehicles. In 2016, the Lancaster County Career and Technical Center received a donation from the Allen Family Foundation.





## Friends of Father Judge High School

### John S. Oyler Foundation

Father Judge High School was established in 1954 by the Archdiocese of Philadelphia as a school for young men in the Holmesburg area of Northeast Philadelphia. Since its formation, “The Friends” have aggressively raised funds necessary to make improvements to the school campus, while also funding academic programs that complement the traditional curriculum. Among its accomplishments, the Friends of Father Judge, raised \$2.8 million dollars to transform what was once called the “Dust Bowl” into a state-of-the-art athletic field complex for student athletes, renovated the computer lab, purchased shuttle vans for activities, and built a center for students with learning challenges. In 2016, Friends of Father Judge received a generous contribution from the John S. Oyler Foundation.



## SkillsUSA

### Wind Gap Chevrolet Buick Foundation

In 2016, SkillsUSA received a contribution from the Wind Gap Chevrolet Buick Foundation. SkillsUSA is a partnership of students, teachers and industry working together to ensure America has a skilled workforce. SkillsUSA helps each student excel. They provide educational programs, events and competitions that support career and technical education in the nation’s classrooms. A recent study of the skills gap from the manufacturing perspective reports that over the next decade 3.4 million new manufacturing jobs will become available, most as a result of retirement. Of those jobs, 2 million will go unfilled due to a lack of qualified workers. SkillsUSA instructs students using a framework centered around three key areas: personal skills, workplace skills and technical skills grounded in academics. SkillsUSA helps students accelerate their personal growth and skill development through programs integrated into the classroom curriculum.

**Bryan Gault**

Wind Gap Chevrolet Buick  
Wind Gap





## Habitat for Humanity - Bedford County

**Judy Faulkner and Art Riexinger Foundation**

Habitat for Humanity of Bedford County, an independently funded affiliate of Habitat for Humanity International, began in 1994. A county-wide organization, Habitat for Humanity of Bedford County builds homes for families in need in Bedford County. Families living in either substandard or overcrowded housing conditions, or those with a severe rent burden can apply to own a Habitat for Humanity home. Homes are kept affordable through volunteer labor, locally supplied materials, community and corporate sponsorships, and individual donations. The family and volunteers also provide “sweat equity” hours in place of a monetary down payment, working to build the home. Recipients receive an affordable, no-profit, zero-interest mortgage. In 2016, Habitat for Humanity of Bedford County received a generous contribution from the Judy Faulkner and Art Riexinger Foundation to help build homes.

## Mainstreet Waynesboro

**Mummert Family Foundation**

In 2016, Mainstreet Waynesboro received a contribution from the Mummert Family Foundation. Mainstreet Waynesboro was established in 1996 to help revitalize Waynesboro’s downtown district through support for new and existing businesses, and by providing improvements, events and activities to attract visitors and residents to come and enjoy the historic downtown area. From the sweetness of the Chocolate Extravaganza, the fun of the Nite at the Races, Market Day in the fall, and the traditional tree lighting and holiday parade, Mainstreet Waynesboro events attempt to bring a hometown feeling back to the downtown area.





## Franklin County - Coyle Free Library Building Fund

### Allan and Barbara Jennings Family Foundation

In 2016, the Allan and Barbara Jennings Family Foundation donated to the Franklin County Coyle Free Library Building Fund. Located in downtown Chambersburg, the Coyle Free Library has been a part of the Chambersburg community since 1891. It was started by a group of ladies called the Afternoon Club, a group that still exists today. The Coyle Free Library has moved to a temporary home on the corner of 2nd St and Broad St (the old Jennings showroom) so Franklin County Library System can move forward on the renovation and expansion of the Coyle Free Library building, a \$5.5 million renovation and expansion project that includes a 4,500 square foot addition and updated amenities.



## Kennett Area YMCA

### Duke and Melissa Scott Family Foundation

In 2016, the Kennett Area YMCA received a contribution from the Duke and Melissa Scott Family Foundation. YMCAs across the country invest in families and neighbors, bringing positive, lasting change that impacts the spirit, mind, and body of those who participate. The Kennett Area YMCA, part of the Greater Brandywine YMCAs, helped their community in 2016 by providing 504 Thanksgiving meals, educating 1,456 children on water safety, mentoring 890 teenagers, providing holiday presents to 2,013 children, and hosting summer camp to 4,351 children. More than \$200,000 was granted to projects in the community by the Kennett Area YMCA.

## The Mix at Arbor Place

### Steve and Donna Jones Foundation

The Mix at Arbor Place was founded in the early 1980s by a local pastor of Laurel Street Mennonite. The Mix at Arbor Place is committed to providing high quality programming to Lancaster's underprivileged children and youth. Between Mornings at The Mix, afterschool programming, buddy programs, and summer camps, The Mix has positively impacted hundreds of students every year. The structured approach allows staff to provide intentional activities for kids and the after school program is a holistic approach to development by focusing on social, academic, spiritual, and physical needs. In 2016, The Mix at Arbor Place received a generous contribution from the Steve and Donna Jones Foundation.







## **Pittsburgh Zoo and PPG Aquarium**

### **Deborah Numrich Campbell Foundation**

The Pittsburgh Zoo and PPG Aquarium is one of only six major zoo and aquarium combinations in the United States. Located in Pittsburgh, Pennsylvania's Highland Park, the zoo sits on 77 acres of park land where it exhibits more than 4,000 animals representing 475 species, including 20 threatened or endangered species. Construction is currently underway for the Jungle Odyssey, which will immerse visitors into a jungle environment highlighting animals including the giant anteater, pygmy hippopotamus, ocelot, capybara, and fossa. Following this, will be the construction of an indoor Conservation Solarium, housing some of the world's most magnificent reptiles; and, finally, the African elephant Maternal Health Care Center at the Zoo's International Conservation Center in Somerset County is scheduled to be completed later this summer. The 37,000-square-foot home is designed to enhance the reproductive success of endangered African elephants in a natural herd environment. In 2016, the Pittsburgh Zoo and PPG Aquarium received a generous contribution from the Deborah Numrich Campbell Foundation.



**Deborah Numrich Campbell**  
Day Automotive Group  
Monroeville

## **Northern Lehigh Historical Society**

### **Rentschler Chevrolet Chrysler Jeep Dodge Foundation**

The Northern Lehigh Historical Society maintains the Slate Heritage Trail, which is a 3.3 mile trail running from Slatington to Slatedale. The Slate Heritage Trail runs along streams, slate beds, and wooded areas. It is a perfect rail-trail for runners, walkers, hikers, bikers, and nature-lovers of all ages. In 2016, the Northern Lehigh Historical Society received a generous contribution from the Rentschler Chevrolet Chrysler Jeep Dodge Foundation.





## **Ned Smith Center for Nature and Art**

**Rolen E. and Patricia H. Ferris Foundation**

Located in Millersburg, Pennsylvania, the Ned Smith Center for Nature and Art was founded in 1993 to celebrate the life and works of its namesake, the nationally recognized wildlife artist, naturalist and writer Ned Smith. The Center's lands offer a tranquil outdoor experience on more than 500 contiguous acres of rustic beauty. With hardwood forest, stream, more than twelve miles of trails and stunning views of the Susquehanna River from the mountaintop, the land also provides habitat for the wildlife Ned Smith immortalized – deer, bear, wild turkey, grouse, fox and many species of smaller animals. The Ned Smith Center plays an active role in education about nature, art and conservation through a year-long series of lectures, field trips, seminars, and other special events. In 2016, the Ned Smith Center for Nature and Art received a contribution from the Rolen E. and Patricia H. Ferris Foundation.



## **Pennypack Ecological Restoration Trust**

**Faulkner Family Foundation**

Founded in 1970, the Pennypack Ecological Restoration Trust is a nonprofit conservancy headquartered in Huntingdon Valley, Pennsylvania, 15 miles northeast of Philadelphia. The Trust is staffed by professionals and volunteers dedicated to the stewardship of the lands that are protected by the Trust in its 832-acre Pennypack Preserve natural area. Active restoration of the lands protected in the Pennypack Preserve is apparent everywhere. For example, the Trust's stewardship staff and volunteers have planted nearly 11,000 trees since 1990. Large tracts that had been overwhelmed by non-native vines just a few years ago now support young forest. And, gaps in the tree canopy of three ancient forests have been planted with young trees to replace aging giants. The Trust's 11 miles of trails are open to visitors free of charge every day of the year from dawn to dusk. In 2016, Pennypack Ecological Restoration Trust received a generous grant from the Faulkner Family Foundation. The Faulkner Family Foundation also supported Abington Health Foundation, Abington Friends School, and the Kate Svitek Memorial Foundation.





# PAA Scholarships

In 2016, PAA awarded \$190,000 to thirteen students. Seven students were chosen to receive the scholarships in honor of their demonstrated charitable characteristics and their work to make a positive impact in their communities. Six students were selected who are currently enrolled in, or are seeking enrollment in, an automotive technology program, and who are sponsored by a new car or truck dealer.

## Community Service Awards

**Meline Avrigian**

Piazza Mazda of West Chester West Chester

**Allison Bare**

Fiore Toyota Volkswagen Audi Hollidaysburg

**Stephanie Garner**

Hondru Chevrolet Manheim

**Alexandra Herbick**

#1 Cochran Monroeville

**Justin Laigaie**

Sloane Toyota of Glenside

**Madison Mackenzie**

Blaise Alexander Chevrolet Muncy

**David Stewart**

Ray Price Stroud Ford Stroudsburg

## Automotive Technology Awards

**Raymond Adams II**

Berger Family Dealerships Hazleton

**Lance Kernoschak**

Abeloff GMC Stroudsburg

**Stone Lewandowski**

C. Harper Chevrolet Belle Vernon

**Ian Schoenleber**

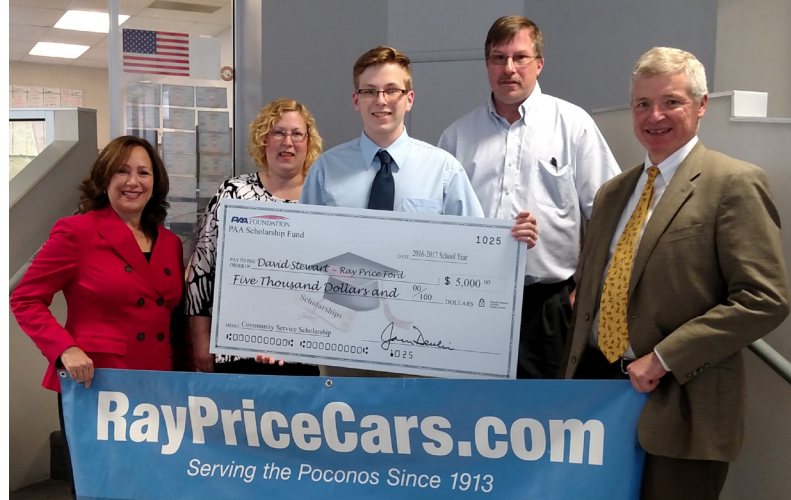
Keenan Honda Doylestown

**Zachary Stump**

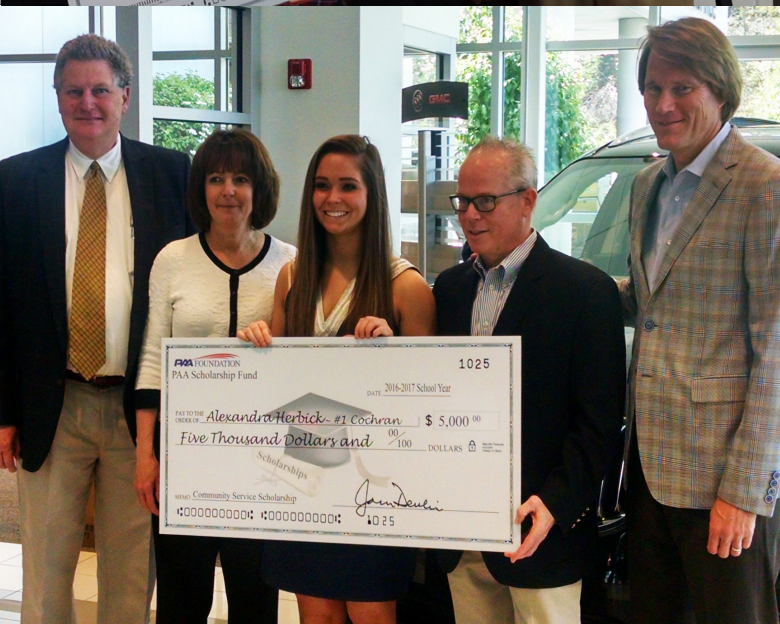
Ecks Garage (Freightliner) Muncy

**Patrick Williams**

Daniels BMW Allentown







# Contributors

Dealer assistance is needed to grow the PAA Fund so that students who are the children of new car and truck dealership employees and those who desire to become technicians will continue to be able to apply for PAA Scholarships. Below are the 2016 Scholarship Fund Contributors.

- #1 Cochran
- Aaron Herbick
- ADA Greater Philadelphia \*\*\*
- ADM Marketing Group \*
- Allentown Kia
- Astar Info
- Autotrader \*
- Baglier Buick GMC Mazda
- Bill Miller
- Blaise Alexander Family Dealerships\*
- Boyer & Ritter \*
- Bryn Mawr Trust Company \*\*
- Bucks County International
- CARFAX \*
- Carriage Trade Auto Auction
- Cindy Cook \*
- CNA Surety Co.
- Conrad Siegel Actuaries
- Craig Scott
- CVR \*
- Daniels BMW Mini of Allentown
- Dealer Planning Services
- Dealertrack \*
- Deborah Campbell
- Duke Scott \*
- Ebersole
- Engle-Hambright & Davies (EHD) \*
- Enterprise Holdings \*
- Faulkner Harrisburg
- Faulkner Honda \*
- First National Bank \*
- Fox Ford Mercury
- Frederick Rentschler
- Freysinger Buick GMC \*
- Fulton Bank
- Gail Faulkner \*\*\*
- Giambalvo Motor Co. \*
- Greater Lehigh Valley ADA
- Greater Pittsburgh ADA \*\*
- Greg McCandless
- Hoffman Ford
- Hondru Ford
- Horwith Trucks
- Hunter Truck Sales & Service \*
- J.L. Freed & Sons
- James Glanzmann
- Jennings Chevrolet Buick GMC
- Jim Tavenner
- Jones Dealerships \*
- Kenneth Shockey \*\*\*
- Kenneth Wallace
- Kevin Erb
- Klick-Lewis
- KPA
- L.B. Smith
- Lansdale Chrysler Dodge
- Laurel Auto Group
- Lawrence Chevrolet \*
- M&T Charitable Foundation \*
- Manheim Auction
- Mark Zukowski (EHD)\*
- Matt and Karen Clark \*
- Matthew Smith
- Members 1st Federal Credit Union
- Michael B. Smith
- Mid-State Construction
- Minooka Motor Sales
- Nicholas-Wyoming Valley Truck Sales
- Otto's Imported Cars
- Oутten Chevrolet \*
- Peter Hondru
- Phillips Office Solutions \*
- Piazza Honda of Springfield
- Porsche of the Main Line
- Profit by Design, LLC \*\*
- Rentschler Chevrolet
- Rhonda Lawrence-Scullen
- Robert Hunter
- S&T Bank \*
- Scott Lustgarten \*
- Sheila Horwith
- Sunoco
- SunTrust Bank \*
- Tim Mitchell
- Tom Freysinger
- Tom Kwiatek
- Turner Hydraulics
- UniFirst \*
- Valley Chevrolet
- Vanguard Cleaning Systems
- Warren Lewis \*
- Whitmoyer Auto Group
- Wind Gap Chevrolet Buick \*
- Withum Smith +Brown
- Wynn Group \*

\* Gifts over \$1,000  
 \*\* Gifts over \$5,000  
 \*\*\* Gifts over \$10,000



# Foundation Account Holders

## Platinum Legacy Club



Paul K. and Anna E. Shockey Family Foundation

## Legacy Club



Auto Dealers CARing For Kids  
Foundation



Faulkner Family Foundation



Joseph and Mary Faulkner Family Foundation



Judy Faulkner and Art Riexinger Foundation

\* New Account in 2016



*Legacy Club*



Robert III and Joanne Preston Family Foundation



Robert P. Kelly Family Foundation

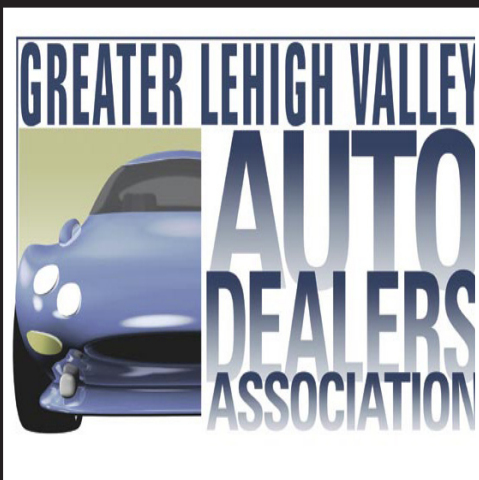


Stuckey Family Foundation\*



Suzi and Scott Lustgarten Family Foundation

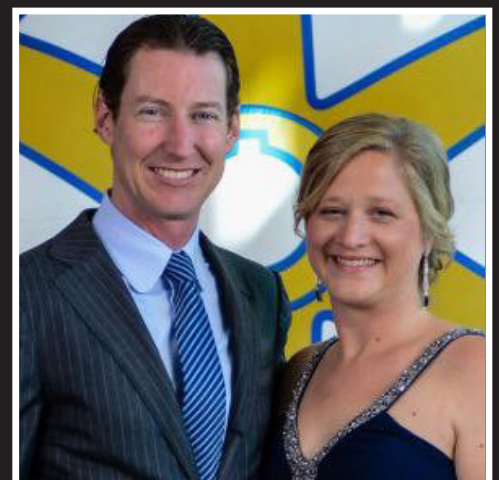
*Cornerstone Club*



Greater Lehigh Valley Automobile Dealers Association Foundation



Greater Pittsburgh Automobile Dealers Foundation



Matt and Tiff Stuckey Foundation\*

# Foundation Account Holders

## Humanitarian Club



Ballantine Family  
Charitable Foundation\*



Deborah Numrich  
Campbell Foundation



Earle M. Mitchell  
Memorial Foundation



Greg and Susan Sutliff  
Foundation



Landis Family  
Foundation



William P. and Lorraine Manos  
Foundation

## Founder's Club



Jim Wynn ~ Forever in our lives  
Wynn Family Foundation



Ann Harris Smith Foundation for  
Gynecological Cancer Awareness



Blaise Alexander  
Family Foundation



*Founder's Club*



Bruce and Dotty Allen  
Family Foundation



Craig and Susan Scott  
Foundation



Fred and Bonnie Savage  
Foundation



Giambalvo Family  
Foundation



John and Loriann Putzier  
Foundation



John S. Oyler  
Foundation



Larry and Gloria New  
Foundation



Lydia M. Oyler  
Memorial Foundation



MAC Chapman Family  
Foundation



# Foundation Account Holders

## Founder's Club



Rentschler Chevrolet Chrysler Jeep Dodge Foundation  
(Fred and Gloria)



(Richard and Faye)



Rob and Christina Cochran  
Family Foundation



Robert and Gail Hunter  
Foundation



Steve and Donna Jones  
Foundation



Sullivan Numrich Family  
Foundation



Wind Gap Chevrolet Buick  
Foundation  
(Bryan Gault and Jeff Baskin)

## Regency Club



Allan and Barbara Jennings  
Family Foundation



Bill and Donna Lake  
Family Foundation



Biondi Family Foundation



*Regency Club*



Clarence and Ellen Smail  
Foundation



D'Agata Family  
Foundation



David and Megan Oyler  
Foundation



David and Patricia Penske  
Foundation



Duke and Melissa Scott  
Family Foundation



Eric and Deborah Hessinger  
Foundation



Fox Family Fund



J. Paul and Dusty McMillen  
Family Foundation



J.L. Feed Foundation  
(Don and Suzanne Franks)



Jack and Cate Oyler  
Foundation



# Foundation Account Holders

## Regency Club



James and Virginia Jones  
Foundation



Joseph and Karen Thurby  
Family Foundation



Kenneth J. Lustgarten Foundation  
(Peter Lustgarten, Stuart Lustgarten)



Kermit and Clarisse  
Hicks Foundation



Middleton Family  
Foundation



Mummert Family  
Foundation



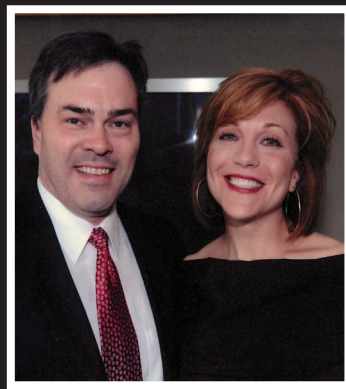
Rolen E. and Patricia H.  
Ferris Foundation



Sterling E. Baugher Family Fund  
(Sarabelle, Cindy and Larry Baugher)



The Third Day Fund



Thomas and Frances  
Rohrich Foundation





Three Little Angels  
Foundation



Vicki and Bob Dolan  
Foundation



Warren Lewis Family  
Foundation

*Benefactor Club*



Andy and Carol Scott  
Fund



Angela and Harry Faulkner  
Family Fund



Benson Family Fund



Berger Family Fund  
(Jacqueline and Earl Berger)



Berger Family Fund  
(Cheryl and Jeff Berger)



Casey Fund



Edward and Jane  
Noerr Fund



# Foundation Account Holders

## Benefactors Club



Grant and Juliet Perry  
Family Fund



Gregg and Jenny Semel  
Foundation



James and Michele  
Peruto Fund



Richard Salezze  
Family Fund



Scott and Lucinda  
FriedmanFund \*



Shuman Family Fund



Thomas and Cheryl  
Leydig Fund



Thomas and Marge  
Noerr Fund

Not Pictured:  
Allen Family Foundation  
Allen Wenger Foundation  
John and Dita Daub Fund  
Thomas Family Foundation



# Financials

## Balance Sheet Summary

Donor-Advised Accounts	\$32,077,210
Undesignated Account	12,640,427
CARing for Kids Account	4,545,437
Benefactor Club Accounts	<u>178,140</u>
<b>Total</b>	<b>\$49,441,214</b>

## Investments

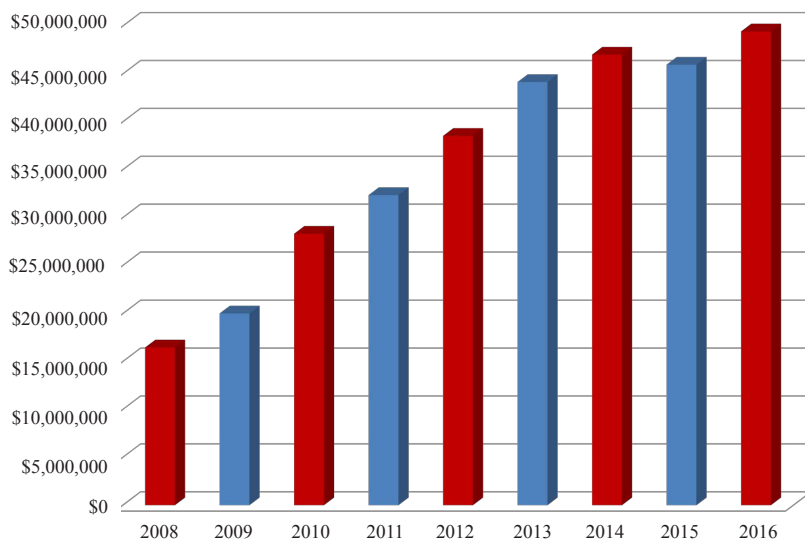
12/31/2016

**Balance** \$49,345,421

2016

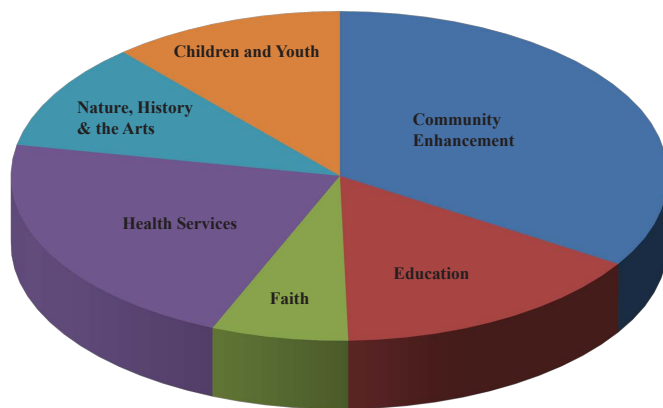
**Investment Income** \$3,189,915

## Fund Balance Growth

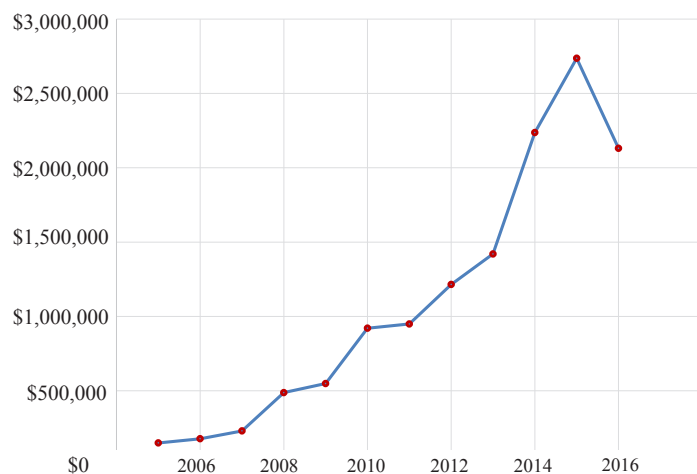


## Grant Totals by Category

Community Enhancement	\$723,900
Health Services	462,618
Education	332,971
Children and Youth	244,197
Nature, History, Arts	224,100
Faith	<u>143,266</u>
<b>Total</b>	<b>\$ 2,131,052</b>



## Grants Distributed to Charities by Year



## Increase in Number of Established Accounts

<b>2016</b>	<b>\$2,131,052</b>	<b>2016</b>	<b>82</b>
2015	\$2,736,455	2015	79
2014	\$2,235,126	2014	67
2013	\$1,400,491	2013	58
2012	\$1,215,197	2012	55
2011	\$949,575	2011	48
2010	\$921,179	2010	40
2009	\$549,065	2009	33
2008	\$488,106		
2007	\$230,000		
2006	\$177,500		
2005	\$149,250		



# Grants Distributed

## Organizations receiving assistance from the PAA Foundation in 2016

Aaron's Acres  
Abington Friends School  
Abington Health Foundation  
Allegheny Riverstone Center for the Arts  
Allentown Central Catholic HS  
Allentown Rescue Mission  
Allentown Symphony Association  
Allison-Antrim Museum  
ALS Association - Western PA Chapter  
Alzheimer's Disease Research  
Alzheimer's Drug Discovery Foundation  
American Cancer Society  
American Diabetes Association  
American Heart Association  
American Red Cross Lehigh Valley  
American Rescue Workers, Inc.  
Americans for Prosperity Foundation  
Angel 34  
Animal Friends  
Ascension Lutheran Church  
Assumption BVM Church  
Audubon YMCA  
Autism Connection of PA  
Autism Speaks - Lehigh Valley Walk  
Auto Dealers CARing for Kids Foundation  
Beacon Clinic  
Bedford County Humane Society  
Benedictine Sisters of Erie  
Bethany Children's Home  
Bethany Christian Services of the Greater Delaware Valley  
Bethesda Mission of Harrisburg  
Big Brothers Big Sisters Lehigh Valley  
Blind Association of Butler County  
Boy Scout Troop 86  
Boys & Girls Club of Allentown  
Boys & Girls Club of Bethlehem  
Boys & Girls Club of Easton  
Boys & Girls Club of Easton  
Boys & Girls Club of Erie  
Boys & Girls Club of Lancaster  
Butler Area Public Library  
Butler County Family YMCA  
Butler County Humane Society  
Camelot for Children Inc.  
Canine Companions for Independence  
Carnegie Mellon University  
CASA of Lancaster County  
Center for Animal Health & Welfare  
Center for Vision Loss  
Central Bucks Family YMCA  
Chesapeake Bay Foundation  
Children's Advocacy Center Lawrence County  
Children's Dyslexia Centers, Inc.  
Children's Home of Easton  
Children's Hospital of Philadelphia

Children's Hospital of Pittsburgh Foundation  
Christ United Church of Christ  
Cleve J. Fredricksen Library Association  
Coco Foundation  
College Street Baptist Church  
Colonial Williamsburg Foundation  
Commonwealth Foundation Public Policy  
Communities in Schools of the Lehigh Valley  
Community Foundation of Washington County  
Community Foundation of Western PA and Eastern OH  
Community Health Clinic of Butler County Inc.  
Community YMCA of Eastern Delaware County  
Concordia Lutheran Ministries  
Conestoga Valley Education Foundation  
Cops 'n' Kids Literacy Program  
Cornerstone Fellowship Assembly of God  
Cranaleith Spiritual Center  
Cultural Alliance of York County  
Cumberland County Historical Society  
Daily Bread Community Food Pantry  
Davidson College  
DeSales University  
Diakon Youth Services  
Dickinson College  
Dreamwrights  
East Hempfield Township K-9 Unit  
East Petersburg Day Steering Committee  
East Petersburg Fire Company  
Easter Seals of Eastern PA  
Eau Claire Volunteer Fire Department  
Edinboro University  
Elizabethtown College  
Elmwood Park Zoo  
Elwyn  
Emmaus Public Library  
End Allergies Together Inc.  
Equi-Librium Inc.  
Erie Arts & Culture  
Erie City Mission  
Erie Philharmonic  
FCLS - Coyle Building Fund  
First Baptist Church  
First Presbyterian Church of Allentown  
First United Methodist Church Lancaster  
Five Star Heart Project  
Flagship Niagara League  
Four Diamonds Fund  
Fox Chase Cancer Center  
Friends of Father Judge High School  
Fulton County Library  
Fulton County Medical Center  
Galena Volunteer Fire Department  
Gateway Education Foundation  
Gifford Youth Achievement Center  
Gladiolus Learning and Development Center  
Glimmer of Hope Foundation  
Golden Tornado Scholastic Foundation, Inc.  
Goldwater Institute  
Good Samaritan Hospital Foundation  
Good Shepherd Rehabilitation  
Grace Seed Inc.  
Grace United Methodist Church - Lewistown  
Greater Pittsburgh Dealers Foundation  
Greater Pittsburgh Literacy Council  
Greater Valley YMCA

Greencastle-Antrim Education Foundation  
Habitat for Humanity of Bedford County  
Hamot Health Foundation  
Hands-on House  
Harrisburg Symphony Orchestra  
Haven House  
Heaven's Family  
Heidelberg United Church of Christ  
Hershey Jr. Bears  
Hershey Palmyra Sertoma Club  
Hispanic Center Lehigh Valley  
Histiocytosis Association  
Holy Family Home  
Holy Trinity Episcopal Academy  
Holy Trinity Episcopal Parish  
Hospice of Central PA  
Hoyt Center for the Arts  
Humane League of Lancaster County  
Humane Society of Vero Beach  
Indian River County Habitat for Humanity  
Indian River Medical Center Foundation  
Interfaith Friends  
Jameson Health Care Foundation  
Jefferson Volunteer Fire Company  
Jewish Federation of Greater Philadelphia  
Jewish Residential Services  
Joseph T. Simpson Public Library  
Judicial Watch  
Junior Achievement of NEPA  
Juvenile Diabetes Research Foundation  
Kate Svitek Memorial Foundation  
Kennett Area YMCA  
Kiwanis Foundation of Palmer Township  
Krysta Hankee Memorial Fund  
Lake Erie College of Osteopathic Medicine  
Lancaster Area Habitat for Humanity  
Lancaster Cleft Palate Clinic  
Lancaster County Career & Technology  
Lancaster County Emergency Response  
Lancaster Dollars for Higher Learning  
Lancaster Education Foundation  
Lancaster Farmland Trust  
Laurel House  
Lawrence County Humane Society  
Lehigh County Humane Society  
Lehigh University - Lehigh Athletics Partnership  
Lehigh Valley Amputee Support Group  
Lehigh Valley Center for Independent Living  
Lehigh Valley Health Network  
Lehigh Valley Military Affairs Council  
Lehigh Valley Public Telecommunications  
Lehigh Valley Therapy Dogs  
Leukemia & Lymphoma Society  
Liberty Elementary Academic Fund  
Library System of Lancaster County  
Life Choices  
Lititz Christian School  
Logan's Heroes Animal Rescue  
Lower Bucks Family YMCA  
Lupus Foundation of America  
Mainstreet Waynesboro, Inc.  
Manheim Township Educational Foundation  
Mansfield Foundation  
March of Dimes - Lehigh Valley  
Margaret Donnelly O'Connor Education



Maridon Museum  
 MCFEE  
 Meals on Wheels of Northampton  
 Meow House  
 Mercy Center for Women  
 Mercy School for Special Learning  
 Mercyhurst University  
 Mikayla's Voice  
 Millersville Community Church  
 Minsi Trails Council, BSA  
 Miracle League of Northampton  
 Miracle League of the Lehigh Valley  
 Misericordia Nursing and Rehab  
 Mission First Housing Group, Inc.  
 Mission Kids Child Advocacy Center  
 Moniteau Scholarship Foundation  
 Monroeville Arts Council  
 Montgomery County SPCA  
 Mountainview Horse Rescue  
 Mt. Hope Nazarene Retirement  
 Multiple Myeloma Research  
 Muscular Dystrophy Association  
 NAACP - Lancaster Branch #2302  
 NADA Foundation  
 Nam Knights Lehigh Valley Chapter  
 National Civil War Museum  
 National Multiple Sclerosis Society  
 Nazareth Blue Eagle Education Foundation  
 Ned Smith Center for Nature and Art  
 Nemours Fund for Children's Health  
 Neshannock High School  
 New Castle Christian Academy  
 New Castle Community YMCA  
 New Visions for Lawrence County  
 Newtown Square Presbyterian Church  
 No Longer Alone Ministries  
 North Penn School District Educational  
 Northern Lehigh High School  
 Northern Lehigh Historical Society  
 Operation Homefront  
 Operation Warm  
 Our Father's Table Soup Kitchen  
 PA Hero Walk  
 PA Museums  
 PACC Caring Cupboard  
 Palmyra Area Business Association  
 Palmyra Fire Company  
 Par for the Cure - New Castle  
 Pediatric Cancer Foundation Lehigh Valley  
 Pediatric Hydrocephalus Foundation  
 Penn College Foundation  
 Penn State Dance Marathon  
 Penn State Hershey  
 Pennsylvania Dutch Council  
 Pennsylvania State University  
 Pennsylvania Wounded Warriors  
 Pennypack Ecological Restoration Trust  
 Pennypack Ecological Restoration Trust  
 Perry Hi-way Hose Co., Inc.  
 Philadelphia Academies, Inc.  
 Philadelphia Freedom Valley YMCA  
 Phoebe Ministries  
 Pittsburgh Foundation - New Castle  
 Pittsburgh Symphony Orchestra  
 Pittsburgh Vintage Grand Prix  
 Pittsburgh Zoo & Aquarium  
 Plainfield Township Volunteer Fire Co.  
 Potential Development Program  
 Pottstown Mercury Foundation  
 Public Broadcasting of Northwestern PA  
 Reformed Presbyterian Church  
 Regina Academy at St. John the Baptist

Riverbend Environmental Education Center  
 Roanoke College  
 ROC Elite Boosters  
 Roman Catholic Diocese of Lexington, KY  
 Roman Catholic Diocese of Pittsburgh Foundation  
 SafeNet  
 Saint Joseph the Worker Catholic Church  
 Salvation Army  
 Scholarship Foundation of the Rotary Club of Erie  
 Schreiber Pediatric Rehab Center of Lancaster County  
 Scleroderma Foundation  
 Senior Adult Activities Center of Montgomery County  
 Shippensburg University Foundation  
 Sigma Tau Gamma Foundation  
 Silver Spring Presbyterian Church  
 Six Mile Run Volunteer Fire Company  
 Skills USA Council  
 Special Olympics of Bethlehem  
 SpiriTrust Lutheran Foundation  
 St. Charles Borromeo Seminary  
 St. Gregory Parish  
 St. John Neumann Regional Academy  
 St. Jude the Apostle Church  
 St. Luke's University Health Network  
 St. Michael the Archangel School  
 St. Paul's Neighborhood Free Clinic  
 Steam Into History  
 Stony Creek Anglers  
 Sunrays Pit Bull Rescue  
 Tabor Community Services, Inc.  
 Temple University Beasley School of Law  
 The Center for Loss and Bereavement  
 The Charles E. Walton/ NJ CAR Charitable Foundation  
 The ELM  
 The Episcopal Academy  
 The Hill School  
 The Hillside School  
 The Humane Society of the United States  
 The Learning Alliance  
 The Lighthouse Foundation  
 The Mix at Arbor Place  
 The Philadelphia Project  
 The Salvation Army of the Lehigh Valley  
 The Swain School  
 The Trustees of the University of Pennsylvania  
 Third Street Alliance for Women and Children  
 Thriving Villages International  
 TMJ Association, Ltd.  
 UDS Foundation  
 Union Area Academic Advocates  
 United Service Organization  
 United Way of Erie County  
 United Way of Franklin County  
 United Way of Lawrence County  
 United Way of Louisiana  
 United Way of Youngstown  
 University of Miami  
 University of Miami Hillel  
 University of Pennsylvania  
 Hospital  
 UPMC  
 Upper Bucks Christian School  
 Upper Bucks YMCA  
 US Navy Memorial  
 Vested Interest in K9s, Inc.  
 Victory House  
 Villa Maria Center  
 Villanova University  
 VisionCorps  
 Visiting Nurse Association  
 VNA & Hospice Foundation  
 Warren Rebounder Club

Warwick Association of Churches  
 Warwick Education Foundation  
 Washington & Jefferson College  
 Water Street Mission  
 Waynesboro Area Business Education  
 & Community Foundation  
 Waynesboro Area Gala Cancer Auction, Inc.  
 Waynesboro Community Theatre Project Inc.  
 Waynesboro Hospital Auxiliary  
 WESA - Essential Public Media, Inc.  
 Westminster College  
 Wetherill School  
 Wind Gap Fire Company  
 WITF Public Media Center  
 Wolf Sanctuary of PA  
 Women's Resource Center - NEPA  
 Woodridge Swim Club  
 Woods Services Inc.  
 Worcester Academy  
 Wounded Warrior Project  
 YMCA North Penn  
 YMCA of Greater Brandywine  
 YMCA of Greater Pittsburgh  
 Young Life  
 YWCA of Greater Harrisburg  
 Zelenople Community Park Association







### **Platinum Legacy Account    \$10 million +**

Paul K. and Anna E. Shockey Family Foundation

### **Legacy Account    \$1 million to \$5 million**

CARing For Kids Foundation - Custodial Account  
Faulkner Family Foundation

Joseph and Mary Faulkner Family Foundation  
Judy Faulkner and Art Riexinger Foundation  
Robert III and Joanne Preston Family Foundation  
Robert P. Kelly Family Foundation  
Stuckey Family Foundation  
Suzi and Scott Lustgarten Family Foundation

### **Cornerstone Account    \$500,000 to \$1 million**

Greater Lehigh Valley Automobile Dealers Association Foundation  
Greater Pittsburgh Automobile Dealers Association Foundation  
Matt and Tiff Stuckey Foundation

### **Humanitarian Account    \$250,000 to \$500,000**

Ballantine Family Charitable Foundation  
Deborah Numrich Campbell Foundation  
Earle M. Mitchell Memorial Foundation  
Greg and Susan Sutliff Foundation  
Landis Family Foundation  
William P. and Lorraine Manos Foundation  
Wynn Family Foundation

### **Founder's Account    \$100,000 to \$250,000**

Allen Family Foundation  
Ann Harris Smith Foundation for Gynecological Cancer Awareness  
Blaise Alexander Family Foundation  
Bruce and Dotty Allen Family Foundation  
Christina M. Savage Memorial Foundation  
Craig and Susan Scott Foundation  
Fred and Bonnie Savage Foundation  
Giambalvo Family Foundation  
John and Loriann Putzier Foundation  
John S. Oyler Foundation  
Larry and Gloria New Foundation  
Lydia M. Oyler Memorial Foundation  
MAC Chapman Family Foundation  
PAA Fund  
Renstschler Chevrolet Chrysler Jeep Dodge Foundation  
Rob and Christina Cochran Family Foundation  
Robert and Gail Hunter Foundation  
Steven and Donna Jones Family Foundation  
Sullivan Numrich Family Foundation  
Thomas Family Foundation  
Wind Gap Chevrolet Buick Foundation

### **Regency Account    \$25,000 to \$100,000**

Allan and Barbara Jennings Family Foundation  
Allen Wenger Foundation  
Bill and Donna Lake Family Foundation  
Biondi Family Foundation  
Clarence and Ellen Smail Foundation  
D'Agata Family Foundation  
David and Megan Oyler Foundation  
David and Patricia Penske Foundation  
Duke and Melissa Scott Family Foundation  
Eric and Deborah Hessinger Foundation  
Fox Family Foundation  
J.L. Freed Foundation  
J. Paul and Dusty McMillen Family Foundation  
Jack and Cate Oyler Foundation  
James and Virginia Jones Foundation  
Joseph and Karen Thurby Family Foundation  
Kenneth J. Lustgarten Foundation  
Kermit and Clarisse Hicks Foundation  
Middleton Family Foundation  
Mummert Family Foundation  
Rolen E. and Patricia H. Ferris Foundation  
Sterling E. Baugher Family Fund  
The Third Day Fund  
Thomas and Frances Rohrich Foundation  
Three Little Angels Foundation Vicki and Bob Dolan Foundation  
Warren Lewis Family Foundation

### **Benefactor's Club    \$10,000 to \$25,000**

Andy and Carol Scott Fund  
Angela and Harry Faulkner Family Fund  
Benson Family Fund  
Berger Family Fund  
Casey Fund  
Edward and Jane Noerr Fund  
Grant and Juliet Perry Family Fund  
Gregg and Jenny Semel Foundation  
James and Michele Peruto Fund  
John and Dita Daub Fund  
Salezze Family Fund  
Scott and Lucinda Friedman  
Shuman Family Fund  
Thomas and Cheryl Leydig Fund  
Thomas and Marge Noerr Fund



**1925 North Front Street, Harrisburg, PA 17102**  
**1-800-242-3745 [www.paa-foundation.org](http://www.paa-foundation.org)**

The official registration and financial information of the Pennsylvania Automotive Association Foundation may be obtained from the Pennsylvania Department of State by calling toll free, within Pennsylvania, 1 (800) 732-0999. Registration does not imply endorsement.