



PLAN

For the Future

GIVE

From the Heart

SEE

The Difference You Make

PAA FOUNDATION
2018
ANNUAL REPORT

To my colleagues and friends,

It is my pleasure to offer you the 2018 PAA Foundation Annual Report. As you will see, 2018 was a very prosperous year for the PAA Foundation. Over \$3.7 million was granted to various charitable organizations by PAAF Donor Advised and Benefactor Club account holders, a record year for giving.

The following pages contain not only information on the many worthwhile organizations receiving donations from account holders, but also stories explaining the reasons behind those gifts.

The PAA Foundation continues to grow - and continues to do great things. A philanthropic tool, PAAF makes it easy to support the charities that matter most to you. If you would like to contribute but do not want to take part in one of the established Giving Recognition Levels, a donation in any amount can always be made to the PAA Scholarship Fund. We encourage you to join us.

In December, my term as a board member and as the PAAF Chairman ended. As of January 1, 2019, Mr. John Oyler, of the Faulkner Organization, began serving as Chairman of the Board of Trustees. It has been my honor to serve as PAAF Chairman since 2006, and I know the Foundation is in good hands.

It is our hope that as you read this report you are inspired to find the causes and organizations that matter most to you. We commend the good work you are doing and look forward to another successful year!



David B. Penske
2018 Chairman
Penske Buick GMC



John Oyler
2019 Chairman
The Faulkner Organization

2018 Board of Trustees

David B. Penske, Chairman
Penske Buick GMC Trucks, Inc.
Shillington

John Oyler, Treasurer
The Faulkner Organization
Trevose

Steven G. Jones, Secretary
Jones Dealerships
Lancaster

PAA Chairman, Ex-Officio
Dominic Conicelli
Conicelli Autoplex, Conshohocken

Blaise Alexander
Alexander Family Dealerships
Montoursville

Deborah Campbell
Day Automotive Group
Monroeville

Robert Cochran
#1 Cochran
Monroeville

Cindy Cook
Jim Wynn Volkswagen Volvo, Inc.
Norristown

Mark Fox
Fox Ford
Waynesburg

Nancy Hunter Mycka
Hunter's Truck Sales and Service
Butler

Allan E. Jennings
Jennings Chevrolet Buick
Chambersburg

Scott Lustgarten
Martin Dealerships
Ardmore

Fred Savage
Savage Automotive Group
Shillington

Craig C. Scott
Scott Honda of West Chester
West Chester

Kenneth B. Shockey
Greencastle

Michael B. Smith
Laurel Auto Group
Johnstown



Dear Friends,

Members of the PAA Foundation plan for a future. These individuals know that charitable giving can have a large and lasting impact on the community.

In 2018, over \$3.7 million was granted to charitable organizations by PAAF account holders. Their donations built hospitals, funded schools, inspired the arts, and gave hope to those in need.

Our donors used the PAA Foundation to give from their heart. A resource to maximize your charitable giving, the PAAF offers incentive money like no other foundation. We connect you to resources that will help you become a more effective and satisfied giver, all while providing great flexibility. The PAA Foundation does not suggest specific places to give. You choose the charities that matter most to you.

We hope this publication inspires you to see the difference you can make. If you would like your giving to be more strategic and aligned with your vision in 2019 and if you haven't explored the many benefits of a PAA Foundation account, we encourage you to make this the year you do.

Table of Contents

Chairman's Message	02
Children & Youth	04-05
History and the Arts	06-07
Health Services	08-09
Education	10-11
Community Enhancement	12-13
PAA Scholarships	14-15
Grants Distributed	16-17
Account Holders	18-26
Financials	27



John Devlin, President
Kelly Fromuth, Executive Director





Driving Away the Cold

Auto Dealers CARing for Kids Foundation

The Auto Dealers CARing for Kids Foundation distributed a record 51,696 brand-new winter coats to area children in need in 2018. Through its annual Driving Away the Cold program, the Foundation has given the gift of warmth to 367,000 impoverished children living in the five-county region of Philadelphia since 2008. “Our new coats make such an impact,” said David Kelleher, President of the Foundation. “New is important because quality equals dignity for a child who is used to hand-me-downs or going without,” he added. The Foundation partners with 220 local school districts, non-profits and social service agencies to get the new coats to the children who need them most. Driving Away the Cold is financially supported by about 180 dealer members of the Auto Dealers Association of Greater Philadelphia. The Philadelphia Auto Show also plays a part by donating \$2.00 from every show ticket sold to the Auto Dealers CARing for Kids Foundation in support of the effort.

Child Advocate Support Center Philadelphia

Joseph and Mary Faulkner Family Foundation

Samantha’s life, prior to intervention by Child Advocates, was far from ideal. Samantha’s mother, a drug addict, was irresponsible, occasionally leaving Samantha alone in the house for an entire night. The morning after one of these nights, Samantha’s sister telephoned Child Advocates to inform them that her mother had “left the night before to get high and didn’t come back.” Child Advocates took on the important responsibility of advocating for Samantha and her sister. While Philadelphia Department of Human Services worked towards finding an appropriate home for Samantha, Child Advocates made sure that Samantha’s best interests were met, offering legal representation and case management. Samantha is just one of the many children whom Child Advocate Support Center of Philadelphia has assisted. The work performed relies almost exclusively on charitable donations. In 2018, the Joseph and Mary Faulkner Family Foundation made a generous donation to assist the Center in the important work they do for children in need in the greater Philadelphia area. In addition, the foundation supported the Children’s Hospital of Philadelphia, Woods Services, and the Fox Chase Cancer Center.



Joshua House Tyrone

Stuckey Family Foundation

Just as the biblical character Joshua led the Israelites into their promised land, Joshua House in Tyrone, Pennsylvania, helps youth understand their promised land and their purpose in life. With the knowledge that the presence of God changes lives, Joshua House seeks to be a catalyst in bringing the youth generation into God's life-changing presence. In 2018, Joshua House received a generous donation from the Stuckey Family Foundation. Prolific givers, the Stuckey Family Foundation also supported Young Life, The Navigators, Coalition for Christian Outreach, Precious Life, Cross Point Fellowship, Teen Challenge, and Helping Hands Ministries.



Bethlehem Special Olympics

Greater Lehigh Valley Automobile Dealers Association Foundation

The Bethlehem Special Olympics program combines camaraderie, sportsmanship and team-building to provide competitive sports experiences for aspiring athletes with intellectual disabilities. The Bethlehem branch offers a variety of sports from basketball and soccer to roller skating and powerlifting. Although the Pennsylvania State Games for the Special Olympics happens in June, the organization hosts weekly games and practices throughout the year. In 2018, they received a generous grant from the Greater Lehigh Valley Automobile Dealers Association Foundation.

Boys and Girls Club Erie

Larry and Gloria New Foundation

The Boys and Girls Club of Erie works to enable youth to improve their educational and technological skills, and to receive assistance in solving emotional and inter-personal problems. Currently, over 1,000 students are assisted each year through the Club's activities. A safe place to learn and grow both after school and during summer breaks, the Boys and Girls Club in Erie helps children find their passions and achieve success. In 2018, the Boys and Girls Club of Erie received a generous donation from the Larry and Gloria New Foundation. Giving to numerous causes in the Erie community, the Larry and Gloria New Foundation helped support Hamot Health, Erie City Mission, Erie Philharmonic, the United Way, and the Benedictine Sisters of Erie, among other organizations.



Institute of Contemporary Art Miami

Suzi and Scott Lustgarten Family Foundation

The Institute of Contemporary Art, Miami (ICA Miami) is dedicated to promoting continuous experimentation in contemporary art, advancing new scholarship, and fostering the exchange of art and ideas throughout the Miami region and internationally. Through an energetic calendar of exhibitions and programs, ICA Miami provides an important international platform for the work of local, emerging, and under-recognized artists and advances the public appreciation and understanding of the most innovative art of our time. The museum is deeply committed to providing public access to artistic excellence by offering year-round free admission. In 2018, the Suzi and Scott Lustgarten Family Foundation gave to the Institute for Contemporary Art Miami, as well as the University of Pennsylvania Hospital, the Children's Hospital of Philadelphia, and the National Multiple Sclerosis Society, and several other worthwhile organizations.



Outcast Rescue

Landis Family Foundation

Every day, dogs are dropped in shelters for reasons that have nothing to do with the dog. Most of the dogs saved by Outcast Rescue are saved from local high kill shelters. Lonely and abandoned, the dogs are fostered, taught basic manners and prepared for a home environment. Outcast Rescue is a 501(c)(3) non-profit organization dedicated to advocating, informing and rescuing America's most misjudged dog breeds - the pit bull and the rottweiler. Pennsylvania is Outcast Rescue's primary area of operation. In 2018, Outcast Rescue received a generous donation from the Landis Family Foundation. In addition, the Landis Family Foundation gave to the Humane Society of the United States, Pennsylvania Equine Rescue and Retirement Foundation, Angel 34 and various organizations benefiting the Greater Lehigh Valley area.



Music for Everyone

Allen Family Foundation

Since 2006, Music For Everyone has awarded over \$1.5 Million in grants, scholarships, and direct program support to schools and community arts groups in Lancaster County. Research shows that music education helps create strong schools and vibrant communities. In many areas, however, music programs are in financial trouble. Despite overwhelming evidence of their value, funding for music programs is being slashed. Music for Everyone is helping to fund these programs. In 2018, Music for Everyone received a generous grant from the Allen Family Foundation. The Allen Family Foundation also gave generously to community groups, hospice care centers, and educational institutions.



Cultural Enrichment Fund

Ballantine Family Foundation

In 2018, the Ballantine Family Foundation were generous supporters of the Cultural Enrichment Fund. The Cultural Enrichment Fund seeks to support a core arts scene in the Harrisburg region by providing unrestricted operating support to a diverse group of core arts organizations across multiple disciplines. The Cultural Enrichment Fund supports the Art Association of Harrisburg, Gamut Theater Group, Open Stage of Harrisburg, Susquehanna Folk Music Society, Central PA Friends of Jazz, Harrisburg Symphony, Susquehanna Art Museum, Theater Harrisburg, Central PA Youth Ballet, and more.

Elmwood Park Zoo

Wynn Family Foundation

Each year, the Wynn Family Foundation supports Elmwood Park Zoo. Elmwood Park Zoo was established in 1924 when a local farmer transferred 16 acres and a small menagerie to the Borough of Norristown. Elmwood Park Zoo currently maintains a collection of over 100 species that hail from all over the globe. Highlights of the collection include giraffes, zebras, bald and golden eagles, jaguars, and red pandas. The Wynn Family Foundation also generously gave to the Auto Dealers CARing for Kids Foundation, the Salvation Army of Philadelphia, Daily Bread Community Food Pantry, Pottstown Mercury Foundation, and Heidelberg United Church of Christ.





Summit Health

Paul K. and Anna E. Shockey Family Foundation

Construction is underway at the Greencastle Medical Office Building. Metal beams and concrete form the 45,000-square-foot building's three stories. The approximately \$15 million building is expected to be completed in fall of 2019. It will house a walk-in care facility as well as primary care and several specialty care practices; to include orthopedics, podiatry, ear nose and throat, OB/GYN, lab, select imaging services, occupational health, and behavioral health. The Shockeys' son, Ken, and his wife, Bonnie, presented the check to Pat O'Donnell, executive vice president of WellSpan Health and president and CEO of Summit Health, and Barbara Rossini, vice president for planning and community relations on November 8, 2018, at the site of the future building. The physical therapy area in the new medical office building will be named for the Paul K. and Anna E. Shockey Family Foundation. Providing generous support in the area of health and wellness, the foundation also supported Penn State Hershey, and Waynesboro Area Life Support Unit in 2018, among many other charitable organizations.

Ronald McDonald House Pittsburgh

Greater Pittsburgh Auto Dealers Association Foundation

Ronald McDonald House Pittsburgh, located adjacent to UPMC Children's Hospital of Pittsburgh, is one of 360 Ronald McDonald houses worldwide, and the only one attached to a hospital. The spacious facility houses 74 private apartments on eight floors. Ronald McDonald House Pittsburgh is for families of seriously ill children from birth through age 21 that will remain in the hospital for an extended length of time. Children like three-year-old Lilah, who was born with a rare kidney disease. After two years of receiving dialysis, Katherin was told that her daughter needed a multi-organ transplant. With the help of family and friends, Katherin found two matches. In the summer of 2018, Lilah had kidney and liver transplants just one day apart. While Lilah was recovering, Katherin and visiting family members stayed at RMH Pittsburgh. It meant a lot to Katherin and Lilah to have family with them. It was especially meaningful when Lilah's big sister could visit. After three months, Lilah was able to go home. In 2018, Ronald McDonald House Pittsburgh received a generous donation from the Greater Pittsburgh Auto Dealers Association Foundation.



Abington Health Foundation

Faulkner Family Foundation

Each year, the Faulkner Family Foundation generously supports Abington Health Foundation. Abington – Jefferson Health is the organization that encompasses Abington Hospital in Abington, PA and Abington – Lansdale Hospital in Hatfield Township, PA, as well as a number of convenient outpatient settings for obtaining expert medical care in Bucks, Montgomery and Philadelphia counties. Outpatient and community-based services are delivered through a network of owned and affiliated physician practices, satellite medical and surgical centers, outpatient laboratories and radiology centers. Community members who do not have the financial means to access care through a private physician office can take advantage of several clinics and services throughout the Abington – Jefferson Health network. In addition to maintaining emergency services at each of the hospitals, centers offering primary and specialty care, dental services, prenatal and obstetrical programs, and newborn care all are available for patients throughout the service area. In addition to Abington Health Foundation, the Faulkner Family Foundation supported Abington Friends School, Pennypack Ecological Restoration Trust, and Philadelphia Freedom Valley YMCA.

Smile Train

Rolen E. and Patricia H. Ferris Family Foundation

Simone was born with a cleft lip. His parents feared that the community in which they lived would reject him but they could not afford a costly surgery to correct their son's smile. His mother was having difficulties feeding him, so she went to a local hospital where she learned techniques on how to feed him without his choking. At the hospital, a family member noticed a flyer about free Smile Train cleft surgeries. Simone's parents were elated and called the number. They learned that Simone was still too young and underweight for the procedure, but after just a few weeks of proper feeding he was approved for his cleft lip surgery. When the day came for Simone's surgery, his parents nearly backed out. They were terrified that they would lose their son, but Smile Train only works with the best medical professionals who assured the parents that the procedure was safe to perform. Now that Simone has received his free cleft surgery, he'll have the opportunity to attend school, make friends with children in his community, and live a life filled with lots of smiles. In 2018, Smile Train received a generous grant from the Rolen E. and Patricia H. Ferris Family Foundation.





Gould Academy **Eric and Deborah Hessinger Family Foundation**

The Gould Academy, a small, private, co-ed, independent boarding school, located at the eastern edge of the White Mountains in Bethel, Maine, prepares academically motivated students for college and helps them to become independent-minded, ethical citizens who will lead lives of purpose, action, excellence, and compassion. At Gould Academy, learning begins in the classroom but it doesn't end there. Students continue learning on the mountains, at dinner with a teacher's family, and in a global community fueled by curiosity and commitment. In 2018, Gould Academy received a donation from the Eric and Deborah Hessinger Family Foundation.



St. John Neumann Regional Academy **Blaise Alexander Family Foundation**

St. John Neumann Regional Academy, a Catholic Diocesan system serving Lycoming County and surrounding areas, was founded in the life and teachings of Jesus Christ and educates the hearts and minds of students, from Pre-K3 through 12th Grade. SJNRA provides a Catholic, faith-centered community dedicated to academic excellence, fostering personal and spiritual growth, the promotion of a life of faith, and the development of leadership expressed in service to others. This is accomplished in partnership with families, local parishes and the community. In 2018, St. John Neumann Regional Academy received a grant from the Blaise Alexander Family Foundation.



SkillsUSA **Wind Gap Chevrolet Buick Foundation**

In 2018, SkillsUSA received a contribution from the Wind Gap Chevrolet Buick Foundation. SkillsUSA is a partnership of students, teachers and industry working together to ensure America has a skilled workforce. SkillsUSA helps each student excel. They provide educational programs, events and competitions that support career and technical education in the nation's classrooms. Working to ensure students attending Career and Technical schools in Lehigh, Monroe, Northampton and Upper Bucks Counties are equipped with the skills to successfully enter the workforce, SkillsUSA relies on industry partners from the community who will benefit from a well trained workforce. Wind Gap Chevrolet Buick Foundation also supported Big Brothers Big Sisters, DaVinci Science Center, Greater Valley YMCA, and Wind Gap Fire Company.



University of Alabama

Giambalvo Family Foundation

In 2018, the University of Alabama received a generous grant from the Giambalvo Family Foundation. Established in 1820, the University of Alabama is the oldest and largest of the public universities in Alabama. The university offers programs of study in 13 academic divisions leading to bachelor's, master's, education specialist, and doctoral degrees. As state funding for higher education decreases, The University of Alabama relies more than ever on donors to provide private support for the future of the University. Annual contributions, of all sizes, provide crucial funding for scholarships, innovative learning experiences and other priority needs. Each gift opens a door of opportunity, whether for one student or for many.



Abington Friends School

Casey Fund

Abington Friends School, a recipient of a grant from the Casey Fund, is an independent Quaker school in Jenkintown, Pennsylvania, serving students from age 3 to grade 12. Abington Friends School has stood on its original campus in the Abington Township neighborhood of Jenkintown since 1697, and is the oldest primary and secondary educational institution in the United States to operate continuously at the same location.

PA Heros Walk **Judy Faulkner and Art Riexinger Foundation**

Since the first PA Hero Walk in 2009, the group has raised and given the Wounded Warrior Project hundreds of thousands of dollars and have helped many veterans with their efforts. In the winter of 2013 the group decided to make a change and dedicate their fundraising efforts to focus on Pennsylvania veterans from all branches and from all eras. Since this change the group has received unanimous accolades for their decision to keep the money raised in Pennsylvania to help Pennsylvania veterans. The PA Hero Walk has raised over \$1.8 Million to date for our veterans. In 2018, PA Heros Walk received a generous grant from the Judy Faulkner and Art Riexinger Foundation.



Laurel House **Three Angels Foundation**

Laurel House first opened its doors in 1980 for the purpose of providing hotline and emergency shelter for victims of domestic violence. Now, nearly 40 years later, Laurel House has grown into a comprehensive domestic violence agency, providing supportive services, as well as dating violence and domestic violence prevention education throughout Montgomery County. In 2018, Laurel House received a grant from the Three Angels Foundation.



Salvation Army Lehigh Valley **Robert P. Kelly Family Foundation**

The Salvation Army, which received a generous contribution from the Robert P. Kelly Family Foundation, operates in the Lehigh Valley. The area of Northampton County has minimal services and service providers for the growing population of residents in need. Bethlehem Corps are specific to the needs of their community with something to offer to people of all ages. The Salvation Army is a vital asset for community members in need of emergency food assistance, clothing, senior programs, utility assistance or for residents simply looking for a safe place to participate in social activities and special events.



United Way of Lawrence County **Robert III and Joanne Preston Family Foundation**

Held each year, the Preston Golf Invitational, in 2018 featuring Rocco Mediate, raised \$27,161. Generous supporters of the United Way of Lawrence County, the Robert III and Joanne Preston Family Foundation also gave a generous grant through the PAA Foundation. The United Way of Lawrence County raises funds for local programs in need to benefit the community. Prolific givers in their community, the foundation also gave to Boys & Girls Club of Youngstown, Cray Youth and Family Services, the Salvation Army, and many other worthwhile causes.

Palmyra Caring Cupboard

Lewis Family Foundation

The Caring Cupboard began through the ministry of the Palmyra Church of the Brethren, when in 2001 children at the church felt that food should be available to transients in the community. This blossomed into a program for not just transients but also members of the church who were in need. Today, Palmyra Caring Cupboard is actively serving an average of 140 families per week in the Palmyra and the Annville-Cleona School District areas. In 2018, Palmyra Caring Cupboard received a generous donation from the Lewis Family Foundation. The Lewis Family Foundation also supported Vista School, Palmyra Fire Company, and PennState Hershey Hospital.



Equines for Freedom

Earle M. Mitchell Memorial Foundation

Equines for Freedom is a nonprofit organization treating active and former military personnel who are experiencing symptoms of Post Traumatic Stress Disorder. Utilizing one of the most effective treatments available, Eye Movement Desensitization and Reprocessing, Equines for Freedom has treated over 70 veterans to date. This therapy combines a licensed mental health professional, a certified equine specialist, and a therapy horse to create a research-based treatment model which strives to resolve emotional difficulties caused by disturbing, difficult, or frightening life experiences. The horse is an integral part of treatment because horses are prey animals and therefore are extremely alert and sensitive to the emotions of those around them. Clients learn to identify their own emotional state by observing the horse's reactions. The horse also helps the client stay grounded as they process past traumas. In 2018, Equines for Freedom received a grant from the Earle M. Mitchell Memorial Foundation.

PAA Scholarships

In 2018, \$215,000 was awarded to 15 students representing dealerships throughout Pennsylvania. Scholarships are in the amount of \$5,000 per year. Four students were selected who are currently enrolled in, or are seeking enrollment in, an automotive technology program, and who are sponsored by a new car or truck dealer. These two-year awards can total \$10,000. Eleven students were chosen to receive scholarships in honor of their demonstrated charitable characteristics and their work to make a positive impact in their communities. The students are eligible for awards of up to \$20,000, if they continue to satisfy scholarship requirements.

Community Service Awards

Victoria Carter

Kelly Buick GMC
Emmaus (Lehigh County)

Darrian Difatta

#1 Cochran Mazda
Monroeville (Allegheny County)

Lyndsey Frost

Independence Honda
Bloomsburg (Columbia County)

Madison Garlinger

Lancaster Dodge Ram Fiat
Lancaster (Lancaster County)

Alison Kelly

Thompson BMW
Doylestown (Bucks County)

Lindsay Lambert

Ray Price Stroud Ford
Stroudsburg (Monroe County)

Alexa Michaels

#1 Cochran Chrysler Dodge Jeep Ram
Natrona Heights (Allegheny County)

Ashley Mistichelli

David Dodge Chrysler Jeep Ram
Glen Mills (Delaware County)

Robert Quinn

New Motors
Erie (Erie County)

Ryan Stewart

Knopf Automotive
Allentown (Lehigh County)

Bailey Titter

Hondru Chevrolet
Manheim (Lancaster County)

Automotive Technology Awards

Joshua Adams

Star Buick GMC
Easton (Northampton County)

Nathan Bender

Outten Chrysler Dodge Jeep
Hamburg (Berks County)

Austin Little

Gene Latta Ford
Hanover (York County)

Oswaldo Monzua

Keim Chevrolet
Paradise (Lancaster County)



Scholarship Fund Contributors

Dealer assistance is needed to grow the PAA Fund so that students who are the children of new car and truck dealership employees and those who desire to become technicians will continue to be able to apply for PAA Scholarships. Below are the 2018 Scholarship Fund Contributors.



ADA Greater Philadelphia
ADM Marketing Group
Agincourt Capital Management
Ally Financial
America's Auto Auction
Armatus Dealer Uplift
AutoTrader
Bank of America Merrill Lynch
Best Authentics
Blaise Alexander Family Dealerships
Boyer & Ritter
Brian Middleton & Associates
Bucks County International Inc.
Carriage Trade Auto Auction
Central States of Omaha
Ciocca Ford
Cochran Dealerships
Colonial Nissan
Concord Advisory Group
Cox Automotive
Daniels BMW Mini of Allentown
Dealertrack
Earl B. Lehman, Inc.
Ebersole Auto
Enterprise Holdings
Faulkner Dealerships
Fiduciary Management Inc.
FNB Bank
Fox Ford
Freysinger Buick GMC
Fulton Financial Corp.
Glanzmann Subaru
Grabiak Chevrolet
Greater Lehigh Valley ADA
Greater Pittsburgh ADA
Hanover Toyota
Harrisburg Senators
Hershey Country Club

Hilton Harrisburg
Hondru Ford
Horwith Trucks
Hotel Hershey
Hunter Dealerships
Hunter Truck Sales & Service
Jennings Chevrolet Buick GMC
John Oyler and Gail Faulkner
Jones Dealerships
Jupiter Title & Tag
Kelly Mazda
Kelly Motor Co.
Kenneth and Bonnie Shockey
Kenworth of Pennsylvania
Klick Lewis
Lake Dealerships
Lancaster Dodge
Lansdale Chrysler Dodge
Lawrence Chevrolet
Legg Mason
Leshar Mack Sales & Service
Lewis Family Foundation
M&T Bank
Manheim Auto Auction
Matt and Karen Clark
Matt and Tiff Stuckey
Members 1st Federal Credit Union
Minooka Motor Sales
NADA Retirement Empower
Outten Dealerships
Pacifico Marple Ford Lincoln
Piazza Honda of Springfield
Pompey Auto Group
Profit By Design
Renstchler Chevrolet Chrysler Dodge
Scott and Suzi Lustgarten
Scranton Dodge
Smail Auto Group

Steve and Donna Jones
SunTrust
The Rittenhouse Hotel
Toyota of York
Unifirst
US Trust
Valley National Bank
Vin Solutions
Wayne County Ford
WEX, Inc. - Sunoco
Whitmoyer Ford
Wind Gap Chevrolet
Withum
Wynn Group

Grants Distributed

Organizations receiving assistance from the PAA Foundation in 2018

Aaron's Acres	Chabad Lubavitch of Berks County	Feeding America	Jewish Federation of Greater Pittsburgh
Abington Friends School	Chesapeake Bay Foundation	FIBUSPAM	Johns Hopkins
Abington Health Foundation	Children's Home of Easton	First Nations Community Healthsource	Joshua House
Abington - Religious Society of Friends	Children's Hospital of Philadelphia Foundation	Flagship Niagara League	Judicial Watch
Abramson Center for Jewish Life	Children's Hospital of Pittsburgh Foundation	Food for the Poor	Kennett Area YMCA
Adams County Library System	Christ Lutheran Church	Four Diamonds Fund - Penn State Hershey	Krysta Hankee Memorial Fund
Alex's Lemonade Stand Foundation	Christ Sanctuary International	Fox Chase Cancer Center	Kutztown University
Allegheny Riverstone Center for the Arts	Christ United Church of Christ	Franklin County Library System	Lackawanna College
Allentown Central Catholic High School	Cleveland Clinic Foundation	Friends of Acadia	Lake Erie College of Osteopathic Medicine
Allentown Symphony Association	Coalition for Christian Outreach	Friends of Father Judge High School	Lancaster Area Habitat for Humanity
Altoona Collegiate Outreach	College Street Baptist Church	Fulton County Library	Lancaster County Career & Technology
Altoona Renaissance Team Inc.	Colonial Williamsburg Foundation	Geneva College	Lancaster Education Foundation
Alvernia University	Colorado State University	Gifford Youth Achievement Center	Lancaster Farmland Trust
Alzheimer's Association - National	Commonwealth Foundation for Public Policy	Gladiolus Learning and Development Center	Lancaster Police Foundation/SERT
America on Wheels	Communities in Schools of the Lehigh Valley	Golden Tornado Scholastic Foundation, Inc.	Laurel House
American Cancer Society - York	Community College of Allegheny County	Good Life Church	Lawrence County Humane Society
American Diabetes Assoc. - National	Community Health Clinic of Butler County Inc.	Good Samaritan Hospital Foundation	LEAD Education Group
American Heart Assoc.	Community Services for Children	Good Shepherd Rehabilitation Hospital	Leader Lehigh Valley
American Red Cross of the Susquehanna Valley	Community YMCA of Eastern Delaware County	Gould Academy	Lehigh Carbon Community College
American Rescue Workers - Hollidaysburg	Conestoga Valley Education Foundation	Grace United Methodist Church - Lewistown	Lehigh County Historical Society
Americans for Prosperity Foundation	Connoquenessing Valley Community Chest	Greater Pittsburgh Automobile Dealers Foundation	Lehigh County Humane Society
Angel 34	Cops 'n' Kids Literacy Program	Greater Valley YMCA	Lehigh University - Lehigh Athletics
Animals in Distress	Cornerstone Fellowship Assembly of God	Greencastle Area Youth Foundation	Partnership
ARC of Blair County	Cray Youth & Family Services	Greencastle-Antrim Education Foundation	Lehigh Valley Center for Independent Living
Art Association of Harrisburg	Crohn's & Colitis Foundation of America	Greenhouse Movement	Lehigh Valley Health Network
Autism Society - Greater Harrisburg Chapter	CrossPointe Fellowship	Greystone Manor TRC	Lehigh Valley Public Telecommunications
Auto Dealers CARing for Kids Foundation	Cultural Alliance of York County	Guardian Angel Medical Service Dogs	Leukemia & Lymphoma Society
Automotive Training Center	Cultural Enrichment Fund	Habitat for Humanity of Bedford County	Level Green Volunteer Fire Department
Benedictine Sisters of Erie	Cumberland Valley Trout Unlimited	Hamot Health Foundation	Library System of Lancaster County
Bethany Children's Home	CURE International	Harmony Fire District	Ligonier Ministries
Bethany Christian Services Greater Delaware Valley	Cystic Fibrosis Foundation - Central PA Chapter	Harrisburg Academy	Lititz Christian School
Bethlehem Special Olympics	Daily Bread Community Food Pantry	Harrisburg Area Community College	Lititz Rec Center
Big Brothers Big Sisters of the Lehigh Valley	Davidson College	Haverford School	Little Sisters of the Poor
Blair County Chamber Foundation	DaVinci Science Center	Healthy Communities Unlimited	Lower Bucks Family YMCA
Blair Regional YMCA	Day One of Greater Altoona	Heidelberg United Church of Christ	Lupus Foundation of America
Blessing Board	DeSales University	Helping Hands Ministries, Inc.	MAABC
Bloomsburg University	Dickinson College	Hempfield Foundation	Make-A-Wish Foundation of Philadelphia & Susquehanna Valley
Boy Scouts of America - Moraine Trails Council	Disability Options Network	Heritage Foundation	Susquehanna Valley
Boys & Girls Club of Bethlehem	Donegal Foundation	Heritage Valley Health System Foundation	Manheim Township Baseball and Softball
Boys & Girls Club of Erie	Dream Come True	Hershey Jr. Bears	Manheim Township Educational Foundation
Boys & Girls Club of Lancaster	Drexel University	Hershey Palmyra Sertoma Club	Mansfield University of Pennsylvania
Boys & Girls Club of Youngstown	Duquesne University	HFC-JLC Memorial Scholarship Fund	Margaret Donnelly O'Connor Education
Brooke's House, Inc.	East Penn School District Education Foundation	Historic Bethlehem Museums & Sites	Maryland Automobile Dealers Association
Butler Area Public Library	East Petersburg Day Steering Committee	Hollidaysburg Area Public Library	MCFEE
Butler County Family YMCA	Eastern University	Hollidaysburg Area School District Foundation	Meadowbrook School
Butler County Humane Society	Edinboro University Foundation	Holy Trinity Episcopal Academy	Meals on Wheels of Northampton County
Camelot for Children Inc.	Elizabeth Lorenzo I Care Foundation	Hospice & Community Care	Mechanicsburg Area Athletic Booster Club
Camp Curtain YMCA	Elizabethtown College	Howard Hanna Children's Free Care Fund	Media Research Center
Cancer Support Community of the Lehigh Valley	Elmwood Park Zoo	Humane League of Lancaster County	Medical College of Wisconsin
Capital Area Girls on the Run	Emmaus Public Library	Humane Society of Vero Beach	Meow House
Capitol Theatre Center Foundation	Empowering Lives Foundation	Indian River County Habitat for Humanity	Mercy Center for Women
Carnegie Museums of Pittsburgh	Ephrata Education Foundation	Indian River Medical Center Foundation	Mercyhurst University
CASA of Lancaster County	Equines for Freedom	Indiana University of Pennsylvania	Messiah College
Cedar Crest College	Erie Arts & Culture	Inflammatory Breast Cancer Research Foundation	Messiah College - Development Office
Center City Church	Erie City Mission	Institute for Cancer Research	Miami University
Center for Vision Loss	Erie Philharmonic	Institute of Contemporary Art, Miami	Middlebury College
Central Bucks Family YMCA	Everytown for Gun Safety Support Fund	Jefferson Volunteer Fire Company	MidPenn Legal Services
Central Pennsylvania Community Foundation	Family Services Inc.	Jewish Federation of Greater Harrisburg	Mikayla's Voice
Central Pennsylvania Conservancy	Farm of Hope, Inc. at Hope Springs Farm	Jewish Federation of Greater Philadelphia	Millersville United Methodist Church

Millersville University
 Minsi Trails Council, Boy Scouts of America
 Misericordia Nursing and Rehab Center
 Misericordia University
 Mission Kids Child Advocacy Center
 Moms Pets
 Monessen City School District
 Monroeville Foundation
 Montgomery County Norristown Public Library
 Montgomery County SPCA
 Mount Ebal Missionary Baptist Church
 Mount St. Mary's University
 Mount St. Mary's University Development Office
 MTEF Community Partners
 Multiple Myeloma Research Foundation
 Music For Everyone
 Nam Knights Lehigh Valley Chapter
 National Character Education Foundation
 National Civil War Museum
 National Corvette Museum Foundation
 National Multiple Sclerosis Society
 Ned Smith Center for Nature and Art
 Nehemiah Project
 Nemours Fund for Children's Health
 New Castle Community YMCA
 New Castle Rotary International
 New Hope Ministries Inc.
 New Visions for Lawrence County
 Newtown Friends School
 Newtown Square Presbyterian Church
 Norriton Fire Engine Company
 North Penn School District Educational Foundation
 Northampton Community College
 Northampton Community College Foundation
 Northeastern Foundation
 Northern Lehigh High School
 Northern Lehigh Youth Athletic Association
 Off The Streets
 Open Stage of Harrisburg
 Operation Our Town
 Operation Warm
 Our Father's Table Soup Kitchen
 Outcast Rescue
 Ovarian Cancer Research Fund Alliance
 PA Council of Trout Unlimited
 PA Hero Walk
 PA Museums
 PA State Police - HEMC
 Palmyra Area Business Association
 Palmyra Caring Cupboard
 Palmyra Fire Company
 Palmyra High School Musical Boosters Association
 Pediatric Cancer Foundation of the Lehigh Valley
 Pediatric Hydrocephalus Foundation
 Penn College Foundation
 Penn Manor Education Foundation
 Penn State Dance Marathon
 Penn State Hershey
 Penn State Mont Alto
 Penn Township Ambulance Association
 Penn-Mont Academy

Pennsylvania College of Technology
 Pennsylvania Equine Rescue and Retirement Foundation
 Pennsylvania State University
 Pennsylvania State University - MBA Program
 Pennsylvania Wounded Warriors
 Pennypack Ecological Restoration Trust
 Perry Hi-way Hose Co., Inc.
 Philadelphia Freedom Valley YMCA
 Philadelphia Yearly Meeting
 Pittsburgh Foundation - New Castle
 Pittsburgh Institute for Neurodegenerative Diseases
 Pittsburgh Vintage Grand Prix
 Plainfield Township Volunteer Fire Co.
 Planned Parenthood Federation of America
 Pottstown Mercury Foundation
 Precious Life, Inc.
 Pregnancy Resource Connection, Inc.
 Project of Easton
 Public Broadcasting of Northwestern PA, Inc.
 Pulmonary Fibrosis Foundation
 Purdue University
 Refuge Youth Network
 Regina Academy at St. John the Baptist
 Riverbend Environmental Education Center
 Roanoke College
 Robert W. Maxwell Memorial Football Club
 Rocking the Boat, Inc.
 Roman Catholic Diocese of Pittsburgh Foundation
 Ronald McDonald House Charities of Pittsburgh
 Rosemont College
 SafeNet
 Saint Thomas More School Endowment
 Salt 'N Light Youth Ministry
 Salvation Army - Altoona
 Salvation Army - Butler
 Salvation Army - Franklin County
 Salvation Army - Philadelphia
 Salvation Army - Western PA Division
 Salvation Army of New Castle, PA
 Saucon Valley Alumni Association
 Save-A-Life, Inc.
 Schreiber Pediatric Rehab Center of Lancaster
 Second Avenue United Methodist Church
 Senior Adult Activities Center of Montgomery
 Seton Hill University
 Seva Foundation
 Shippensburg University Foundation
 Shriner's Hospitals for Children
 Sigma Tau Gamma Foundation
 Sisters of the Humility of Mary
 Six Mile Run Volunteer Fire Company
 Skills Foundation
 Skills USA Council
 Slippery Rock University
 Smile Train
 Solanco Education Foundation
 Somerset Alliance Church
 Special Olympics
 SpiriTrust Lutheran Foundation
 St. Francis University

St. John Neumann Regional Academy
 St. John The Baptist Maronite Church
 St. John's United Church of Christ
 St. Joseph's University
 St. Jude the Apostle Church
 St. Luke's Hospice
 St. Luke's University Health Network
 St. Michael the Archangel School
 St. Paul's Neighborhood Free Clinic
 St. Stephen's Episcopal School
 St. Vincent de Paul Society of Indian River County
 Stony Creek Anglers
 Summit Health
 Support Center for Child Advocates
 Susquehanna County Interfaith
 Susquehanna Valley Foundation
 Tabor Community Services, Inc.
 Tash, Inc.
 Teen Central
 Teen Challenge Training Center, Inc.
 The Center for Loss and Bereavement
 The ELM
 The Episcopal Academy
 The Foundation for Enhancing Communities
 The Hill School
 The Humane Society of the United States
 The Learning Alliance
 The Lighthouse Foundation
 The Navigators
 The Philadelphia Zoo
 The Salvation Army of the Lehigh Valley
 The Super Brew Fund
 The Swain School
 The Trustees of the University of Pennsylvania
 TMJ Association, Ltd.
 Trafford Fire Co.
 Troops First Foundation
 Trout Unlimited - National Office
 Trustees of the University of Pennsylvania Hospital
 Turning Point of Lehigh Valley
 U.S. Fund for UNICEF
 Union Area Academic Advocates
 United Service Organizations
 United Way of Erie County
 United Way of Franklin County
 United Way of Indian River County
 United Way of Lawrence County
 United Way of the Capital Region
 United Way of Youngstown and the Mahoning Valley
 University of Alabama
 University of Miami - School of Communication
 University of Miami Hillel
 University of Pittsburgh
 University of Scranton
 University of South Carolina
 University of Valley Forge
 UPMC Altoona Foundation
 UPMC Hillman Cancer Center
 Upper Bucks YMCA
 US Navy Memorial Foundation
 Victory House of the Lehigh Valley

Villa Maria Education and Spirituality Center
 Villanova University
 Vineyard Altoona
 VisionCorps
 Visiting Nurse Association
 Vista School
 VNA & Hospice Foundation
 Warwick Education Foundation
 Washington & Jefferson College
 Water Street Mission
 Waynesboro Area Advanced Life Support
 Waynesboro Area Gala Cancer Auction
 Waynesburg University
 WESA
 Wesley Family Services
 West Chester University
 West Virginia Wesleyan College
 Westminster College
 Wetherill School
 Wilkes University
 Williamson College of the Trades
 Wind Gap Fire Company
 Winter Park Christian Church
 WITE, Inc.
 Women in Need
 Women's Care Center of IRC
 Women's Resource Center - NEPA
 Woods Services Inc.
 Worcester Academy
 World Relief
 Wounded Warrior Project
 Wyomissing Area Education Foundation
 YMCA North Penn
 YMCA of Greater Brandywine
 York County Honors Choirs
 Young Life
 Young Life Central Pennsylvania
 Young Life RMR Backcountry
 YWCA of Greater Harrisburg
 Zelenople Public Library
 Zelenople Revitalization Inc.



Foundation Account Holders

Platinum Legacy Account



Paul K. and Anna E. Shockey Family Foundation

Gold Legacy Account



Auto Dealers CARing For Kids Foundation

Legacy Account



Faulkner Family Foundation



Greater Pittsburgh Automobile Dealers Foundation



Judy Faulkner and Art Riexinger Foundation

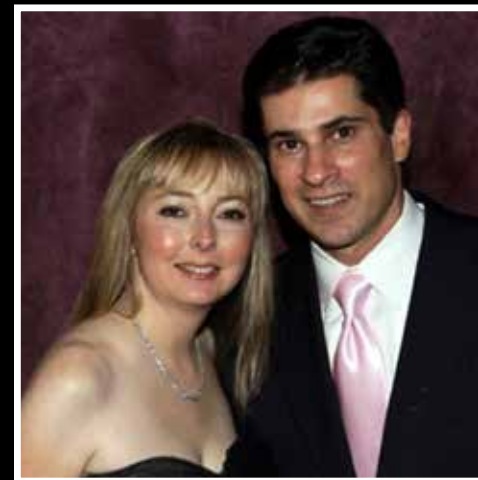
Legacy Account



Robert P. Kelly Family Foundation

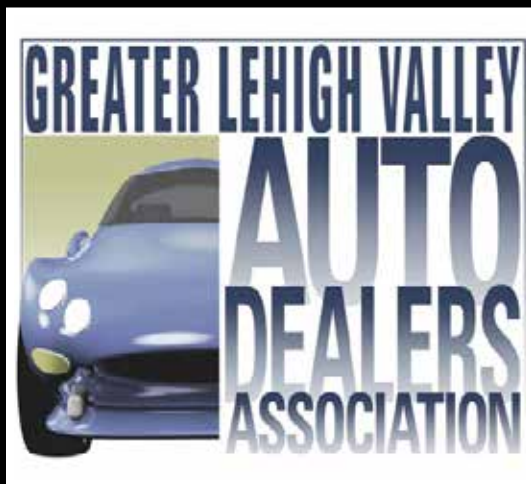


Stuckey Family Foundation



Suzi and Scott Lustgarten Family Foundation

Cornerstone Account



Greater Lehigh Valley Automobile Dealers Association Foundation



John and Loriann Putzier Foundation



Joseph and Mary Faulkner Family Foundation

** Denotes New Account*

Cornerstone Account



Matt and Tiff Stuckey
Foundation



Robert III and Joanne Preston Family Foundation



Wynn Family Foundation

Humanitarian Account



Ballantine Family
Charitable Foundation



Blaise Alexander
Family Foundation



Earle M. Mitchell
Memorial Foundation



Greg and Susan Sutliff
Foundation

Humanitarian Account



Rob and Christina Cochran
Family Foundation



Steve and Donna Jones
Foundation



William P. and Lorraine Manos
Foundation

Founder's Account



Ann Harris Smith Foundation for
Gynecological Cancer Awareness



Bruce and Dotty Allen
Family Foundation



Craig and Susan Scott
Foundation



David P. Kelleher and Marlo
Pagano-Kelleher Foundation *

** Denotes New Account*

Founder's Account



Deborah Numrich
Campbell Foundation



Eric and Deborah Hessinger
Foundation



Fred and Bonnie Savage
Foundation



Giambalvo Family
Foundation



J.L. Freed Foundation
(Don and Suzanne Franks)



John Oyler and Gail
Faulkner Foundation



Kermit and Clarisse
Hicks Foundation



Landis Family Foundation



Lewis Family Foundation



Lydia M. Oyler
Memorial Foundation



MAC Chapman Family
Foundation



PAA Scholarship
Fund

Founder's Account



Rentschler Chevrolet Chrysler Jeep Dodge Foundation
(Fred and Gloria Rentschler, Richard and Faye Rentschler)



Robert and Gail Hunter
Foundation



Scott Auto Group
Foundation *

Founder's Account



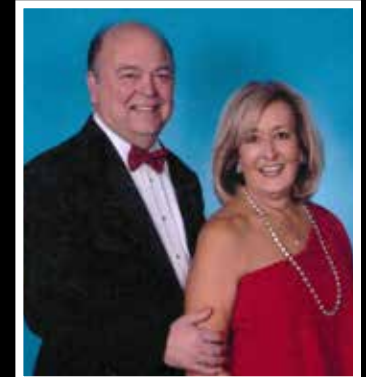
Sullivan Numrich Family
Foundation



Wind Gap Chevrolet Buick
Foundation
(Bryan Gault and Jeff Baskin)



Allan and Barbara Jennings
Family Foundation



Baglier Family
Foundation

Regency Account



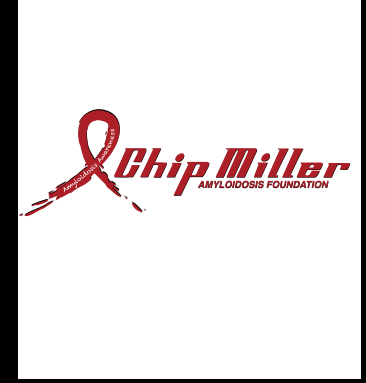
Bill and Donna Lake
Family Foundation



Biondi Family Foundation



Casey Fund



Chip Miller Memorial Foundation*

** Denotes New Account*

Regency Account



D'Agata Family
Foundation



David and Megan Oyler
Foundation



David and Patricia Penske
Foundation



Duke and Melissa Scott
Family Foundation



Fox Family Fund



Grant and Juliet Perry Family Foundation



Gregg and Jenny Semel
Foundation



Hurt Family Foundation



J. Paul and Dusty McMillen
Family Foundation



Jack and Cate Oyler
Foundation



James and Virginia Jones
Foundation



Joseph and Karen Thurby
Family Foundation

Regency Account



Joseph And Nancy
Mycka Foundation *



Kenneth J. Lustgarten Foundation
(Peter Lustgarten, Stuart Lustgarten)



Larry and Gloria New
Foundation



Middleton Family
Foundation



Mummert Family
Foundation



Pompey Auto Group
Foundation *



Rolan E. and Patricia H.
Ferris Foundation



Scott and Lucinda
FriedmanFund



Smail Family Foundation



Sterling Baugher Family Fund
(Sarabelle, Cindy and Larry Baugher)



The Third Day Fund



Thomas and Frances
Rohrich Foundation



Three Little Angels Foundation

** Denotes New Account*

Benefactor Club



Andy and Carol Scott
Fund



Angela and Harry Faulkner
Family Fund



Benson Family Fund



Berger Family Fund
(Jacqueline and Earl Berger, Cheryl and Jeff Berger)



David Watts Fund



Edward and Jane
Noerr Fund



James and Michele
Peruto Fund



Richard Salezze
Family Fund



Shuman Family Fund



Thomas and Cheryl
Leydig Fund



Thomas and Marge
Noerr Fund



William Egan Fund

Not Pictured:
Allen Family Foundation
Allen Wenger Foundation
Christina M. Savage Memorial Foundation
John and Dita Daub Fund
Laura Corazza Family Foundation *
Thomas Family Foundation

** Denotes New Account*

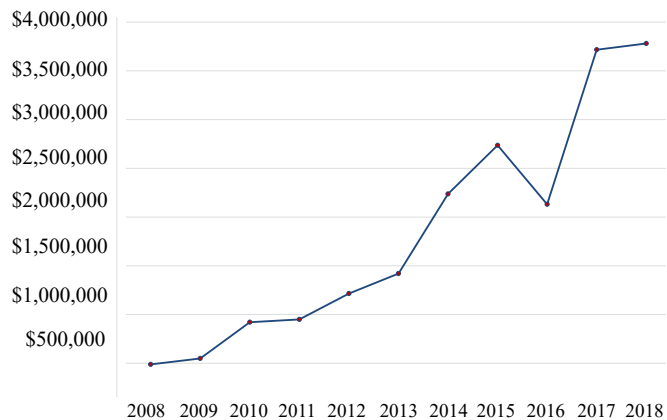
Balance Sheet Summary

Donor-Advised Accounts	\$34,964,038
Undesignated Account	11,862,425
CARing for Kids Account	4,847,374
Benefactor Club Accounts	<u>167,093</u>
Total	\$51,840,930

Increase in # of Established Accounts

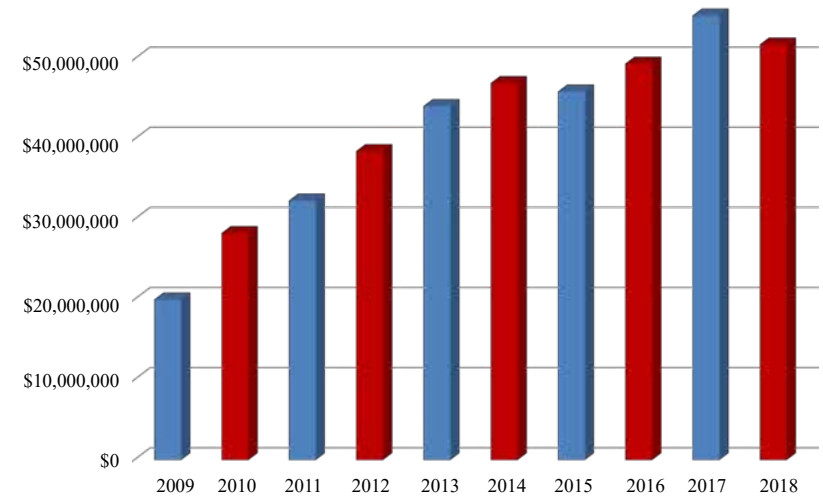
2018	91
2017	85
2016	82
2015	79
2014	67
2013	58
2012	55
2011	48
2010	40
2009	33

Increase in Grants Distributed to Charities by Year



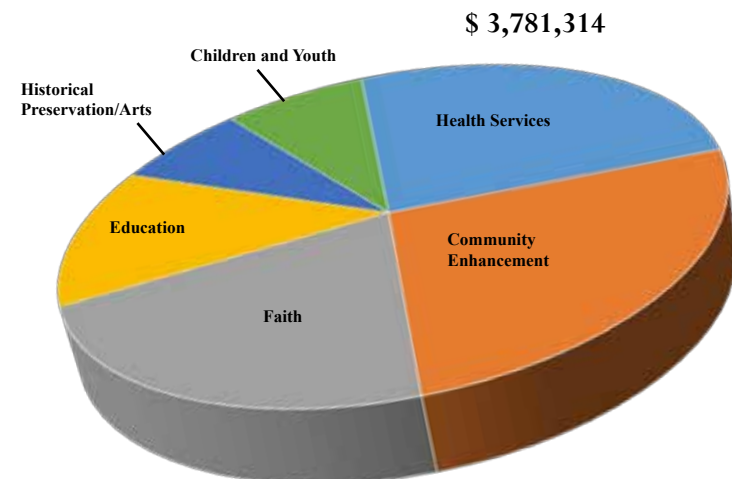
2018	\$3,781,314
2017	\$3,717,122
2016	\$2,131,052
2015	\$2,736,455
2014	\$2,235,126
2013	\$1,400,491
2012	\$1,215,197
2011	\$949,575
2010	\$921,179
2009	\$549,065
2008	\$488,106

Fund Balance History



Grant Totals by Category

Health Services	\$960,287
Community Enhancement	936,800
Faith	837,809
Education	496,000
Children and Youth	286,668
Historical Preservation/Arts	263,750



Platinum Legacy Account \$10 million +

Paul K. and Anna E. Shockey Family Foundation

Gold Legacy Account \$5 million to \$10 Million

CARING For Kids Foundation - Custodial Account

Legacy Account \$1 million to \$5 million

Faulkner Family Foundation
Greater Pittsburgh Automobile Dealers Foundation
Judy Faulkner and Art Riexinger Foundation
Robert P. Kelly Family Foundation
Stuckey Family Foundation
Suzi and Scott Lustgarten Family Foundation

Cornerstone Account \$500,000 to \$1 million

Greater Lehigh Valley Automobile Dealers Association Foundation
John & Loriann Putzier Family Foundation
Joseph and Mary Faulkner Family Foundation
Matt & Tiff Stuckey Foundation
Robert III and Joanne Preston Family Foundation
Wynn Family Foundation

Humanitarian Account \$250,000 to \$500,000

Ballantine Family Charitable Fund
Blaise Alexander Family Foundation
Earle M. Mitchell Memorial Foundation
Greg and Susan Sutliff Foundation
Rob and Christina Cochran Family Foundation
Steve and Donna Jones Foundation
William P. and Lorraine Manos Foundation

Founder's Account \$100,000 to \$250,000

Allen Family Foundation
Ann Harris Smith Foundation for Gynecological Cancer Awareness
Bruce and Dotty Allen Family Foundation
Christina M. Savage Memorial Foundation
Craig and Susan Scott Foundation
David P. Kelleher and Marlo Pagano-Kelleher Foundation
Deborah Numrich Campbell Foundation
Eric and Deborah Hessinger Foundation
Fred and Bonnie Savage Foundation
Giambalvo Family Foundation
J.L. Freed Foundation
John Oyler and Gail Faulkner Foundation
Kermit and Clarisse Hicks Foundation
Landis Family Foundation
Laura Corazza Family Foundation
Lewis Family Foundation
Lydia M. Oyler Memorial Foundation
MAC Chapman Family Foundation
PAA Fund
Rentschler Chevrolet Chrysler Jeep Dodge Foundation
Robert and Gail Hunter Foundation
Scott Auto Group Foundation
Sullivan Numrich Family Foundation
Thomas Family Foundation
Wind Gap Chevrolet Buick Foundation

Regency Account \$25,000 to \$100,000

Allan and Barbara Jennings Family Foundation
Allen Wenger Foundation
Baglier Family Fund
Bill and Donna Lake Family Foundation
Biondi Family Foundation
Casey Fund
Chip Miller Memorial Foundation
D'Agata Family Foundation
David and Megan Oyler Foundation
David and Patricia Penske Foundation
Duke and Melissa Scott Family Foundation
Fox Family Foundation
Grant & Juliet Perry Family Foundation
Gregg and Jenny Semel Foundation
Hurt Family Fund
J. Paul and Dusty McMillen Family Fund
Jack and Cate Oyler Foundation
James and Virginia Jones Foundation
Joseph and Karen Thurby Family Foundation
Joseph and Nancy Mycka Foundation
Kenneth J. Lustgarten Foundation
Larry and Gloria New Foundation
Middleton Family Foundation
Mummert Family Foundation
Pompey Auto Group Foundation
Rolen E. and Patricia H. Ferris Foundation
Scott and Lucinda Friedman Foundation
Smail Family Foundation
Sterling E. Baugher Family Fund
The Third Day Fund
Thomas and Frances Rohrich Foundation
Three Little Angels Foundation

Benefactor's Club \$10,000 to \$25,000

Andy and Carol Scott Fund
Angela and Harry Faulkner Family Fund
Benson Family Fund
Berger Family Fund
David Watts Fund
Edward and Jane Noerr Fund
James and Michele Peruto Fund
John and Dita Daub Fund
Salezze Family Fund
Shuman Family Fund
Thomas and Cheryl Leydig Fund
Thomas and Marge Noerr Fund
William Egan Fund



1925 North Front Street, Harrisburg, PA 17102

1-800-242-3745 www.paa-foundation.org

The official registration and financial information of the Pennsylvania Automotive Association Foundation may be obtained from the Pennsylvania Department of State by calling toll free, within Pennsylvania, 1 (800) 732-0999. Registration does not imply endorsement.